



LAND  
REGISTRY  
SERVICES

# Title Search



NEW SOUTH WALES LAND REGISTRY SERVICES - TITLE SEARCH

FOLIO: AUTO CONSOL 7966-42

SEARCH DATE	TIME	EDITION NO	DATE
4/6/2019	11:41 AM	-	-

VOL 7966 FOL 42 IS THE CURRENT CERTIFICATE OF TITLE

## LAND

LAND DESCRIBED IN SCHEDULE OF PARCELS  
LOCAL GOVERNMENT AREA KIAMA  
PARISH OF KIAMA COUNTY OF CAMDEN  
TITLE DIAGRAM SEE SCHEDULE OF PARCELS

## FIRST SCHEDULE

THE COUNCIL OF THE MUNICIPALITY OF KIAMA

## SECOND SCHEDULE (4 NOTIFICATIONS)

- 1 RESERVATIONS AND CONDITIONS IN THE CROWN GRANT(S)
- 2 Q572422 EASEMENT FOR WATER SUPPLY AFFECTING THE PART OF LOT 69A ABOVE DESCRIBED SHOWN SO BURDENED IN DP451312
- \* 3 3287371 EASEMENT FOR ACCESS, ELECTRICITY PURPOSES & SERVICES 5 WIDE AFFECTING THE PART OF LOT 2 IN DP818379 SHOWN SO BURDENED IN DP818379
- \* 4 3287371 EASEMENT FOR SEWERAGE PURPOSES AFFECTING THE PART OF LOT 2 IN DP818379 SHOWN SO BURDENED AS "PROPOSED EASEMENT FOR RISING MAIN 3 WIDE & VARIABLE" IN DP818379

## NOTATIONS

UNREGISTERED DEALINGS: NIL

## SCHEDULE OF PARCELS

LOTS 316-317 IN DP30126  
LOT 69A IN DP30126  
LOT 2 IN DP818379

## TITLE DIAGRAM

DP30126  
DP30126  
DP818379.

\*\*\* END OF SEARCH \*\*\*

TP-LT

PRINTED ON 4/6/2019

\* Any entries preceded by an asterisk do not appear on the current edition of the Certificate of Title. Warning: the information appearing under notations has not been formally recorded in the Register. InfoTrack an approved NSW Information Broker hereby certifies that the information contained in this document has been provided electronically by the Registrar General in accordance with Section 96B(2) of the Real Property Act 1900.

D.P. 30126 Sh 1/2  
Municipality of Kiama  
Shire of  
H231050 10.6.59.

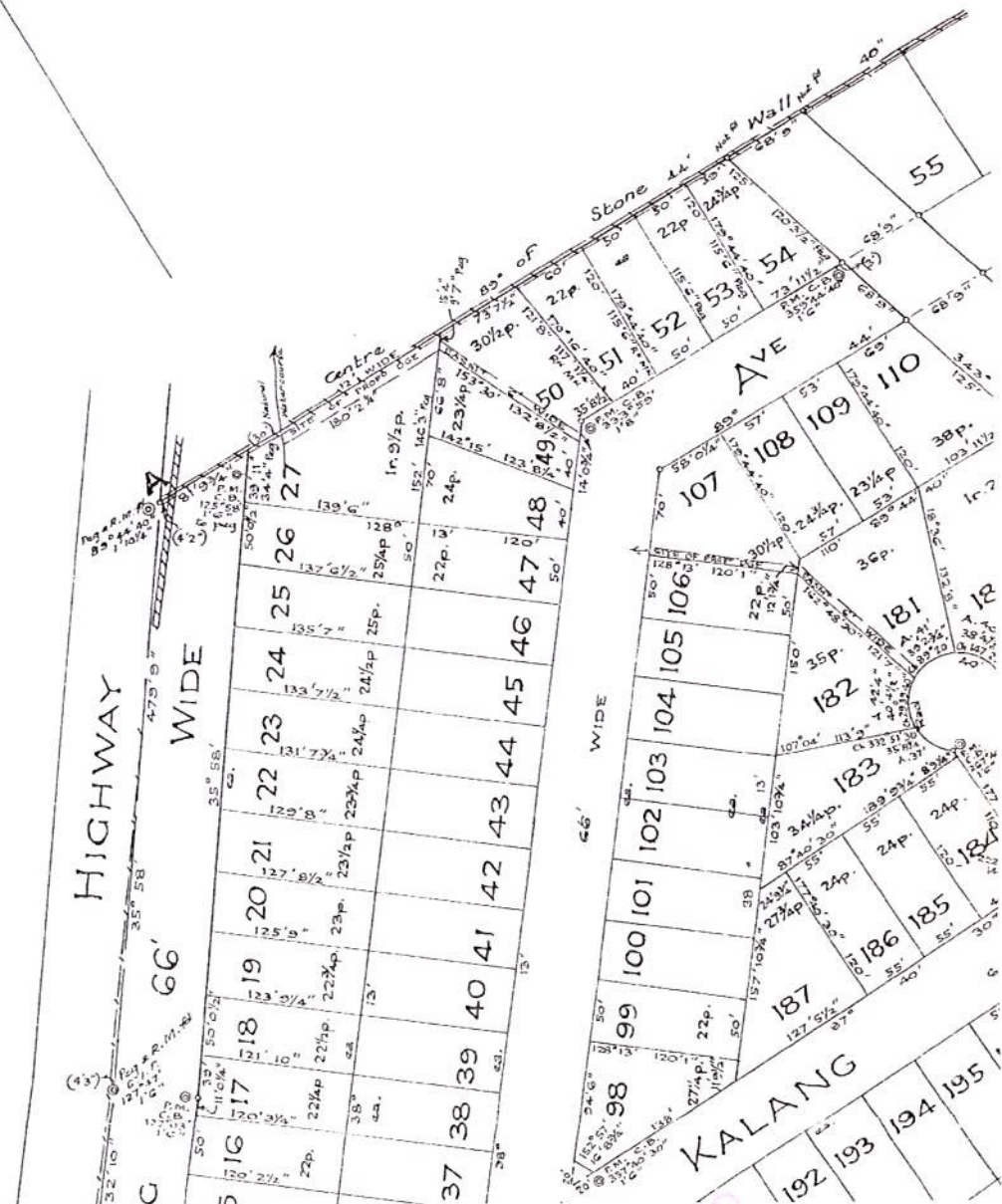
# PLAN

of subdivision of part of  
KIAMA HEIGHTS EST

PARISH OF KIAMA

COUNTY

Scale: 100 feet to an inch



# PLAN

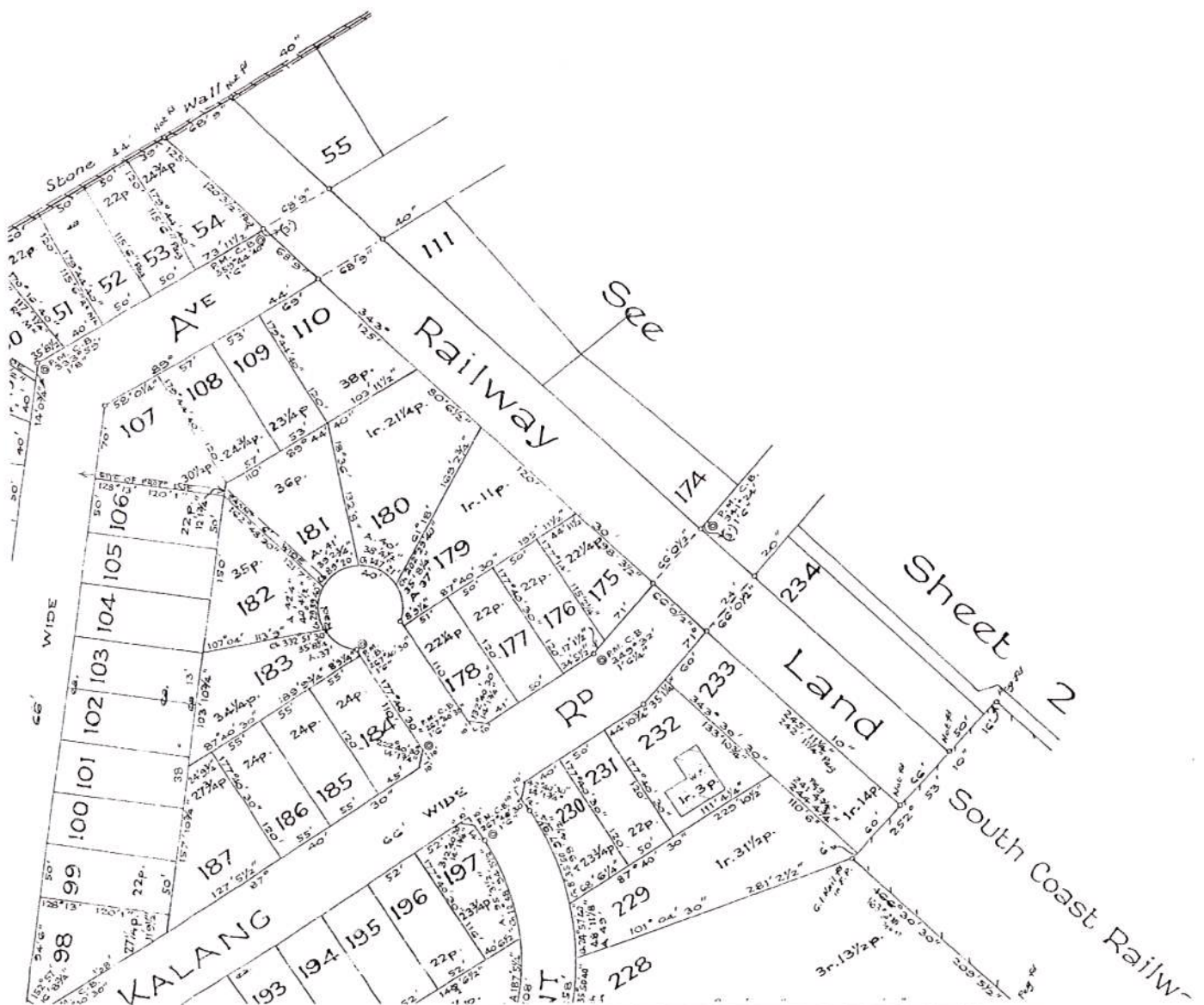
Division of part of Portion 13  
MA HEIGHTS ESTATE

A COUNTY OF CAMDEN

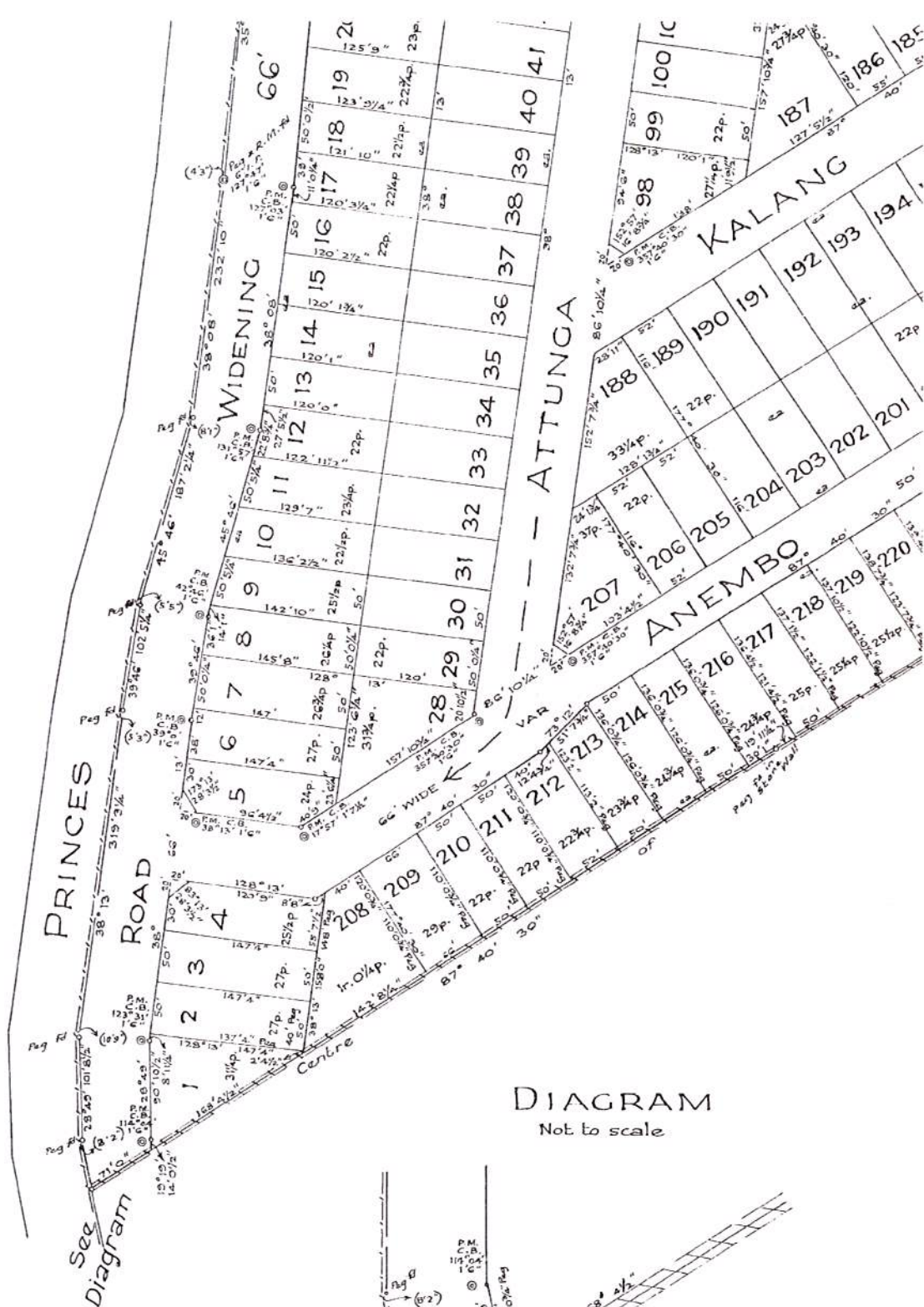
Scale: 100 feet to an inch

Sheet 1/2

D. P. 30126 (E)  
1999







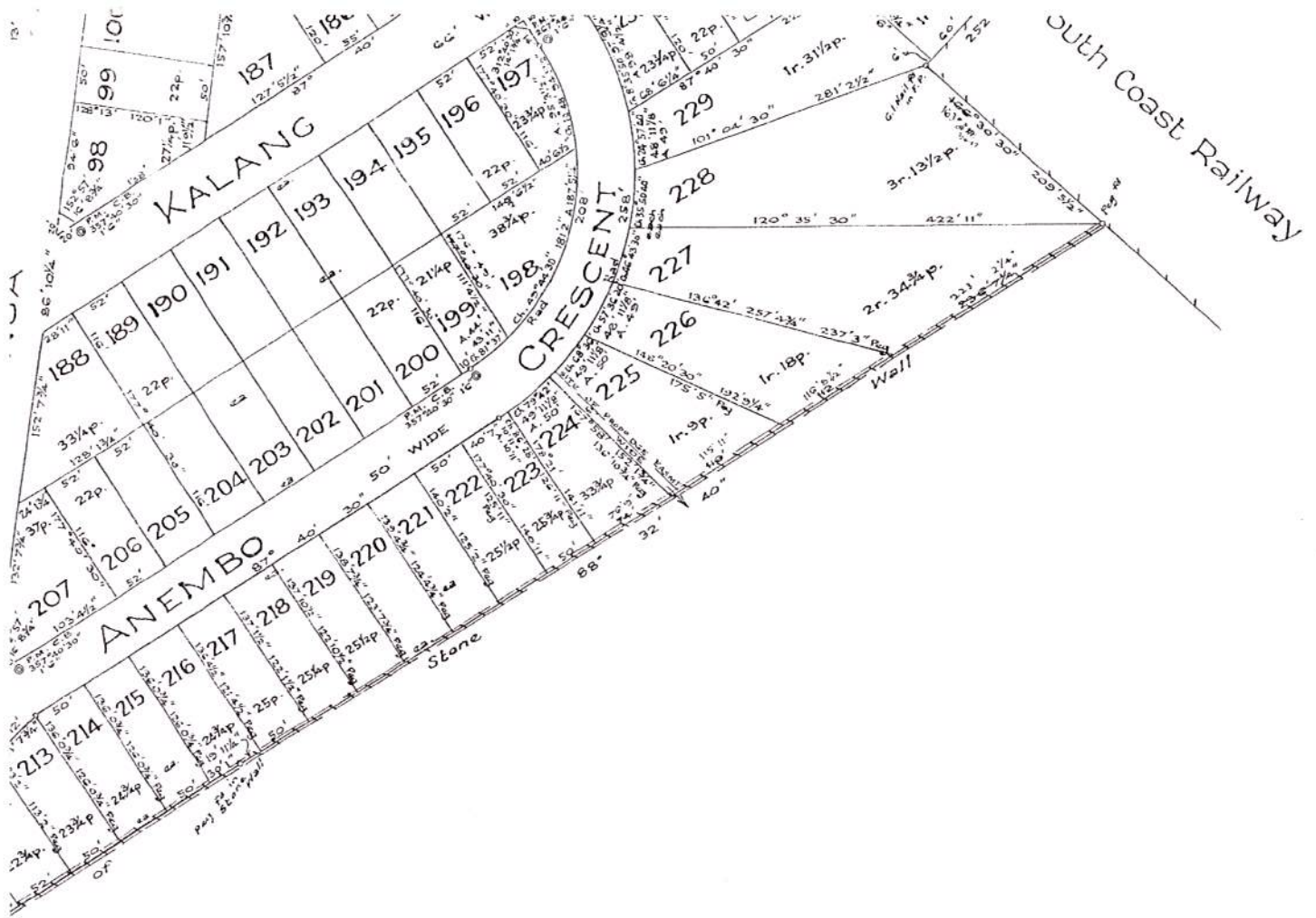
Approved by the Council and Certified in  
accordance with the Provisions of Section  
327 of the Local Government Act, 1919.

Subdivision No. 9/1959

Council Clerk

Datum line of Azimuth A-B

DP 30126 SH 1/2

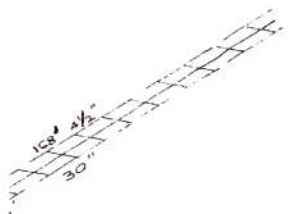


Alterations and additions made 8.10.1959

It is intended to dedicate the new roads and pathway to the public.  
The proposed drainage easements are intended to be appurtenant  
to the new roads shown hereon.

AGRAM  
to scale

The Common Seal of the Council of the Municipality of Kiama  
was hereto affixed in pursuance of a resolution of the Council  
passed on the 11<sup>th</sup> day of May 1959



Mayor

Town Clerk

DP30126 Sh 1/2 (E)

The Common Seal of the  
Municipality of Kiama  
limited was hereto  
affixed by resolution of  
the Board dated 11.5.59

I, Albert Sydney James Hunter  
of Gosford

a surveyor registered under the Surveyors Act, 1929 1946, hereby certify  
that the survey represented in this plan is accurate and has been made by me  
in accordance with the Survey Practice Regulations, 1933, and was completed on 6-3-59

(Signature)

Surveyor registered under the Surveyors Act, 1929 46

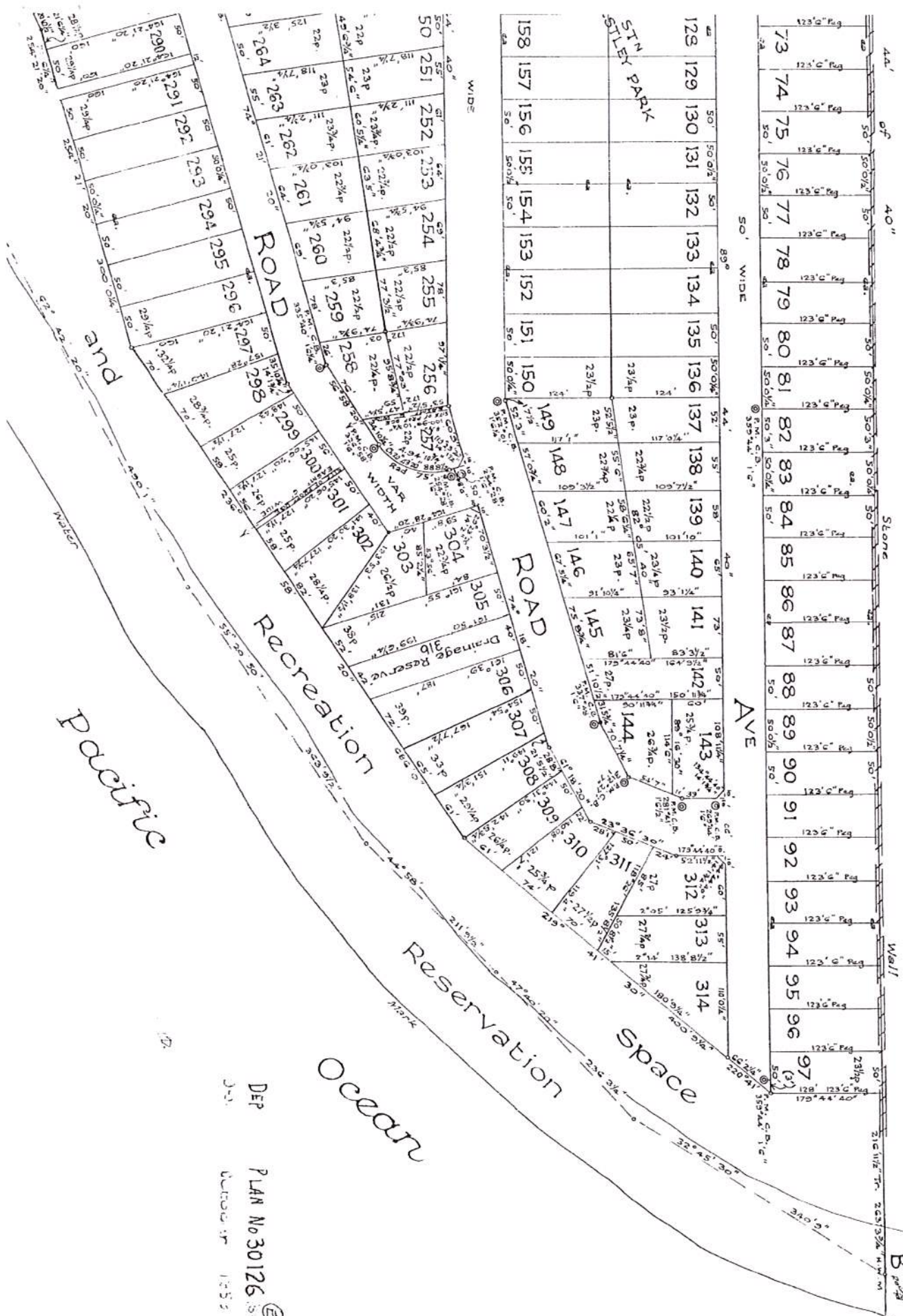
Director

Scale not correct 1:1000

Insert date of Survey



# Sheet 2 of 2 sheets

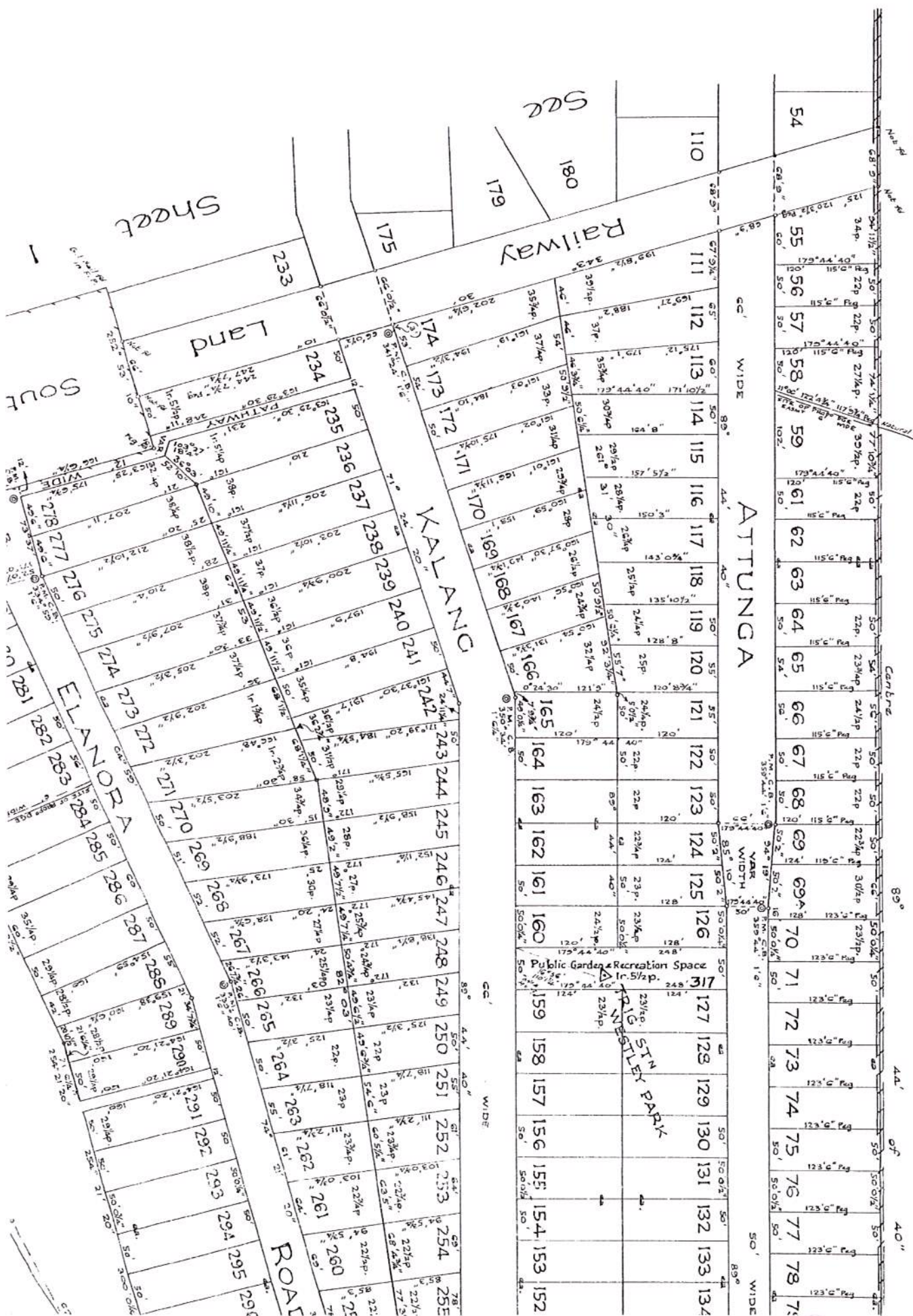


DEP  
PLAN No 30126  
1997



H231050 10:6:59

DP30126 SL 2/2 (E)

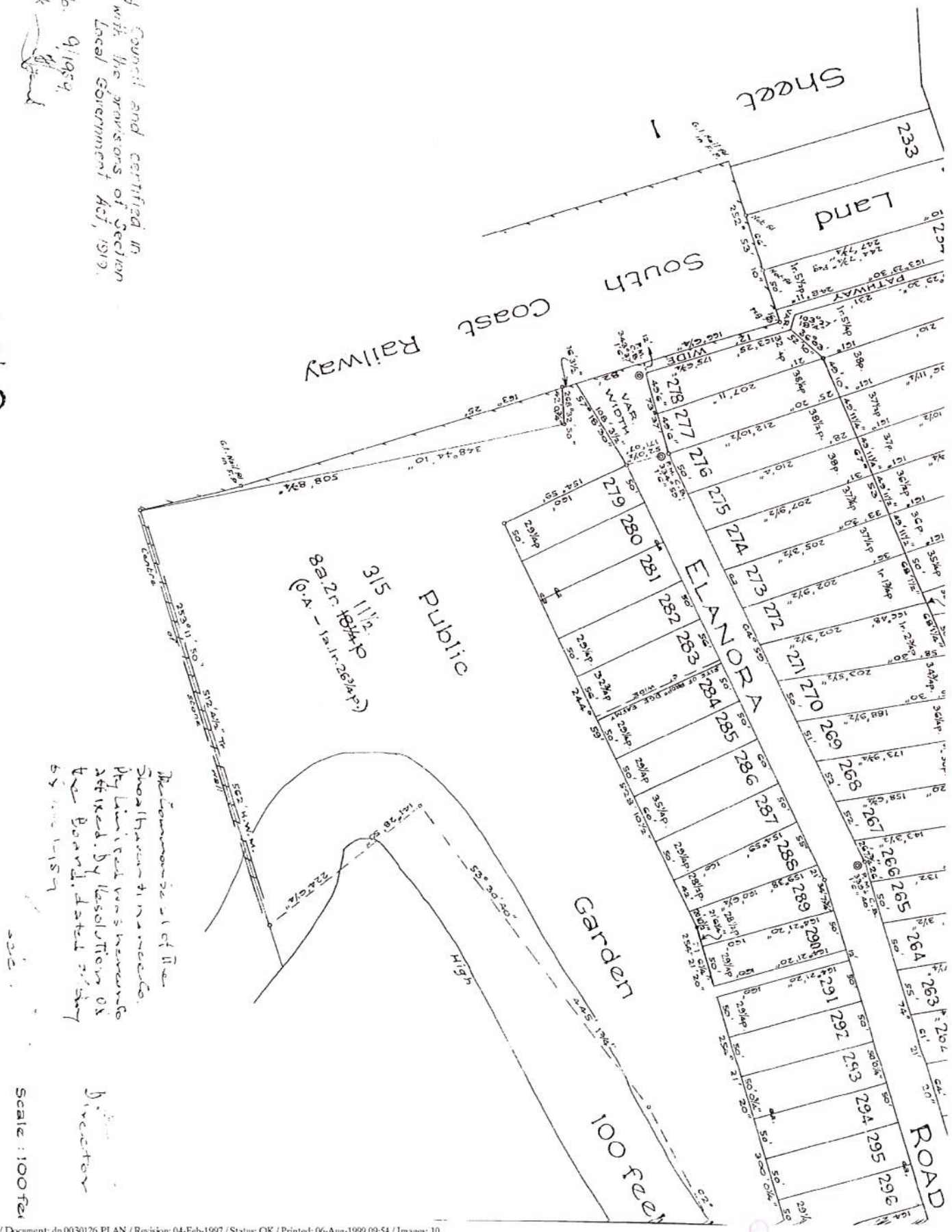






Approved by Council and certified in  
 accordance with the provisions of Section  
 321 of the Local Government Act, 1979.  
 Subdivision No. 9/1989.  
 Council Clerk *[Signature]*

DP 30126 SH2/2 ©



FEET INCHES	ACRES
1 1/2	0.0267
2 1/2	0.0534
3 1/2	0.0801
4 1/2	0.1068
5 1/2	0.1335
6 1/2	0.1602
7 1/2	0.1869
8 1/2	0.2136
9 1/2	0.2403
10 1/2	0.2670
11 1/2	0.2937
12 1/2	0.3204
13 1/2	0.3471
14 1/2	0.3738
15 1/2	0.4005
16 1/2	0.4272
17 1/2	0.4539
18 1/2	0.4806
19 1/2	0.5073
20 1/2	0.5340
21 1/2	0.5607
22 1/2	0.5874
23 1/2	0.6141
24 1/2	0.6408
25 1/2	0.6675
26 1/2	0.6942
27 1/2	0.7209
28 1/2	0.7476
29 1/2	0.7743
30 1/2	0.8010
31 1/2	0.8277
32 1/2	0.8544
33 1/2	0.8811
34 1/2	0.9078
35 1/2	0.9345
36 1/2	0.9612
37 1/2	0.9879
38 1/2	1.0146
39 1/2	1.0413

FEET INCHES	ACRES
40 1/2	1.0680
41 1/2	1.0947
42 1/2	1.1214
43 1/2	1.1481
44 1/2	1.1748
45 1/2	1.2015
46 1/2	1.2282
47 1/2	1.2549
48 1/2	1.2816
49 1/2	1.3083
50 1/2	1.3350
51 1/2	1.3617
52 1/2	1.3884
53 1/2	1.4151
54 1/2	1.4418
55 1/2	1.4685
56 1/2	1.4952
57 1/2	1.5219
58 1/2	1.5486
59 1/2	1.5753
60 1/2	1.6020
61 1/2	1.6287
62 1/2	1.6554
63 1/2	1.6821
64 1/2	1.7088
65 1/2	1.7355
66 1/2	1.7622
67 1/2	1.7889
68 1/2	1.8156
69 1/2	1.8423
70 1/2	1.8690
71 1/2	1.8957
72 1/2	1.9224
73 1/2	1.9491
74 1/2	1.9758
75 1/2	2.0025
76 1/2	2.0292
77 1/2	2.0559
78 1/2	2.0826
79 1/2	2.1093
80 1/2	2.1360
81 1/2	2.1627
82 1/2	2.1894
83 1/2	2.2161
84 1/2	2.2428
85 1/2	2.2695
86 1/2	2.2962
87 1/2	2.3229
88 1/2	2.3496
89 1/2	2.3763
90 1/2	2.4030
91 1/2	2.4297
92 1/2	2.4564
93 1/2	2.4831
94 1/2	2.5098
95 1/2	2.5365
96 1/2	2.5632
97 1/2	2.5899
98 1/2	2.6166
99 1/2	2.6433
100 1/2	2.6700
101 1/2	2.6967
102 1/2	2.7234
103 1/2	2.7501
104 1/2	2.7768
105 1/2	2.8035
106 1/2	2.8302
107 1/2	2.8569
108 1/2	2.8836
109 1/2	2.9103
110 1/2	2.9370
111 1/2	2.9637
112 1/2	2.9904
113 1/2	3.0171
114 1/2	3.0438
115 1/2	3.0705
116 1/2	3.0972
117 1/2	3.1239
118 1/2	3.1506
119 1/2	3.1773
120 1/2	3.2040
121 1/2	3.2307
122 1/2	3.2574
123 1/2	3.2841
124 1/2	3.3108
125 1/2	3.3375
126 1/2	3.3642
127 1/2	3.3909
128 1/2	3.4176
129 1/2	3.4443
130 1/2	3.4710
131 1/2	3.4977
132 1/2	3.5244
133 1/2	3.5511
134 1/2	3.5778
135 1/2	3.6045
136 1/2	3.6312
137 1/2	3.6579
138 1/2	3.6846
139 1/2	3.7113
140 1/2	3.7380
141 1/2	3.7647
142 1/2	3.7914
143 1/2	3.8181
144 1/2	3.8448
145 1/2	3.8715
146 1/2	3.8982
147 1/2	3.9249
148 1/2	3.9516
149 1/2	3.9783
150 1/2	4.0050
151 1/2	4.0317
152 1/2	4.0584
153 1/2	4.0851
154 1/2	4.1118
155 1/2	4.1385
156 1/2	4.1652
157 1/2	4.1919
158 1/2	4.2186
159 1/2	4.2453
160 1/2	4.2720
161 1/2	4.2987
162 1/2	4.3254
163 1/2	4.3521
164 1/2	4.3788
165 1/2	4.4055
166 1/2	4.4322
167 1/2	4.4589
168 1/2	4.4856
169 1/2	4.5123
170 1/2	4.5390
171 1/2	4.5657
172 1/2	4.5924
173 1/2	4.6191
174 1/2	4.6458
175 1/2	4.6725
176 1/2	4.6992
177 1/2	4.7259
178 1/2	4.7526
179 1/2	4.7793
180 1/2	4.8060
181 1/2	4.8327
182 1/2	4.8594
183 1/2	4.8861
184 1/2	4.9128
185 1/2	4.9395
186 1/2	4.9662
187 1/2	4.9929
188 1/2	5.0196
189 1/2	5.0463
190 1/2	5.0730
191 1/2	5.0997
192 1/2	5.1264
193 1/2	5.1531
194 1/2	5.1798
195 1/2	5.2065
196 1/2	5.2332
197 1/2	5.2599
198 1/2	5.2866
199 1/2	5.3133
200 1/2	5.3400
201 1/2	5.3667
202 1/2	5.3934
203 1/2	5.4201
204 1/2	5.4468
205 1/2	5.4735
206 1/2	5.5002
207 1/2	5.5269
208 1/2	5.5536
209 1/2	5.5803
210 1/2	5.6070
211 1/2	5.6337
212 1/2	5.6604
213 1/2	5.6871
214 1/2	5.7138
215 1/2	5.7405
216 1/2	5.7672
217 1/2	5.7939
218 1/2	5.8206
219 1/2	5.8473
220 1/2	5.8740
221 1/2	5.9007
222 1/2	5.9274
223 1/2	5.9541
224 1/2	5.9808
225 1/2	6.0075
226 1/2	6.0342
227 1/2	6.0609
228 1/2	6.0876
229 1/2	6.1143
230 1/2	6.1410
231 1/2	6.1677
232 1/2	6.1944
233 1/2	6.2211
234 1/2	6.2478
235 1/2	6.2745
236 1/2	6.3012
237 1/2	6.3279
238 1/2	6.3546
239 1/2	6.3813
240 1/2	6.4080
241 1/2	6.4347
242 1/2	6.4614
243 1/2	6.4881
244 1/2	6.5148
245 1/2	6.5415
246 1/2	6.5682
247 1/2	6.5949
248 1/2	6.6216
249 1/2	6.6483
250 1/2	6.6750
251 1/2	6.7017
252 1/2	6.7284
253 1/2	6.7551
254 1/2	6.7818
255 1/2	6.8085
256 1/2	6.8352
257 1/2	6.8619
258 1/2	6.8886
259 1/2	6.9153
260 1/2	6.9420
261 1/2	6.9687
262 1/2	6.9954
263 1/2	7.0221
264 1/2	7.0488
265 1/2	7.0755
266 1/2	7.1022
267 1/2	7.1289
268 1/2	7.1556
269 1/2	7.1823
270 1/2	7.2090
271 1/2	7.2357
272 1/2	7.2624
273 1/2	7.2891
274 1/2	7.3158
275 1/2	7.3425
276 1/2	7.3692
277 1/2	7.3959
278 1/2	7.4226
279 1/2	7.4493
280 1/2	7.4760
281 1/2	7.5027
282 1/2	7.5294
283 1/2	7.5561
284 1/2	7.5828
285 1/2	7.6095
286 1/2	7.6362
287 1/2	7.6629
288 1/2	7.6896
289 1/2	7.7163
290 1/2	7.7430
291 1/2	7.7697
292 1/2	7.7964
293 1/2	7.8231
294 1/2	7.8498
295 1/2	7.8765
296 1/2	7.9032
297 1/2	7.9299
298 1/2	7.9566
299 1/2	7.9833
300 1/2	8.0100
301 1/2	8.0367
302 1/2	8.0634
303 1/2	8.0901
304 1/2	8.1168
305 1/2	8.1435
306 1/2	8.1702
307 1/2	8.1969
308 1/2	8.2236
309 1/2	8.2503
310 1/2	8.2770
311 1/2	8.3037
312 1/2	8.3304
313 1/2	8.3571
314 1/2	8.3838
315 1/2	8.4105
316 1/2	8.4372
317 1/2	8.4639
318 1/2	8.4906
319 1/2	8.5173
320 1/2	8.5440
321 1/2	8.5707
322 1/2	8.5974
323 1/2	8.6241
324 1/2	8.6508
325 1/2	8.6775
326 1/2	8.7042
327 1/2	8.7309
328 1/2	8.7576
329 1/2	8.7843
330 1/2	8.8110
331 1/2	8.8377
332 1/2	8.8644
333 1/2	8.8911
334 1/2	8.9178
335 1/2	8.9445
336 1/2	8.9712
337 1/2	9.0079
338 1/2	9.0346
339 1/2	9.0613
340 1/2	9.0880
341 1/2	9.1147
342 1/2	9.1414
343 1/2	9.1681
344 1/2	9.1948
345 1/2	9.2215
346 1/2	9.2482
347 1/2	9.2749
348 1/2	9.3016
349 1/2	9.3283
350 1/2	9.3550
351 1/2	9.3817
352 1/2	9.4084
353 1/2	9.4351
354 1/2	9.4618
355 1/2	9.4885
356 1/2	9.5152
357 1/2	9.5419
358 1/2	9.5686
359 1/2	9.5953
360 1/2	9.6220
361 1/2	9.6487
362 1/2	9.6754
363 1/2	9.7021
364 1/2	9.7288
365 1/2	9.7555
366 1/2	9.7822
367 1/2	9.8089
368 1/2	9.8356
369 1/2	9.8623
370 1/2	9.8890
371 1/2	9.9157
372 1/2	9.9424
373 1/2	9.9691
374 1/2	9.9958
375 1/2	10.0225
376 1/2	10.0492
377 1/2	10.0759
378 1/2	10.1026
379 1/2	10.1293
380 1/2	10.1560
381 1/2	10.1827
382 1/2	10.2094
383 1/2	10.2361
384 1/2	10.2628
385 1/2	10.2895
386 1/2	10.3162
387 1/2	10.3429
388 1/2	10.3696
389 1/2	10.3963
390 1/2	10.4230
391 1/2	10.4497
392 1/2	10.4764
393 1/2	10.5031
394 1/2	10.5298
395 1/2	10.5565
396 1/2	10.5832
397 1/2	10.6099
398 1/2	10.6366
399 1/2	10.6633
400 1/2	10.6900
401 1/2	10.7167
402 1/2	10.7434
403 1/2	10.7701
404 1/2	10.7968
405 1/2	10.8235
406 1/2	10.8502
407 1/2	10.8769
408 1/2	10.9036
409 1/2	10.9303
410 1/2	10.9570
411 1/2	10.9837
412 1/2	11.0104
413 1/2	11.0371
414 1/2	11.0638
415 1/2	11.0905
416 1/2	11.1172
417 1/2	11.1439
418 1/2	11.1706
419 1/2	11.1973
420 1/2	11.2240
421 1/2	11.2507
422 1/2	11.2774
423 1/2	11.3041
424 1/2	11.3308
425 1/2	11.3575
426 1/2	11.3842
427 1/2	11.4109
428 1/2	11.4376
429 1/2	11.4643
430 1/2	11.4910
431 1/2	11.5177
432 1/2	11.5444
433 1/2	11.5711
434 1/2	11.5978
435 1/2	11.6245

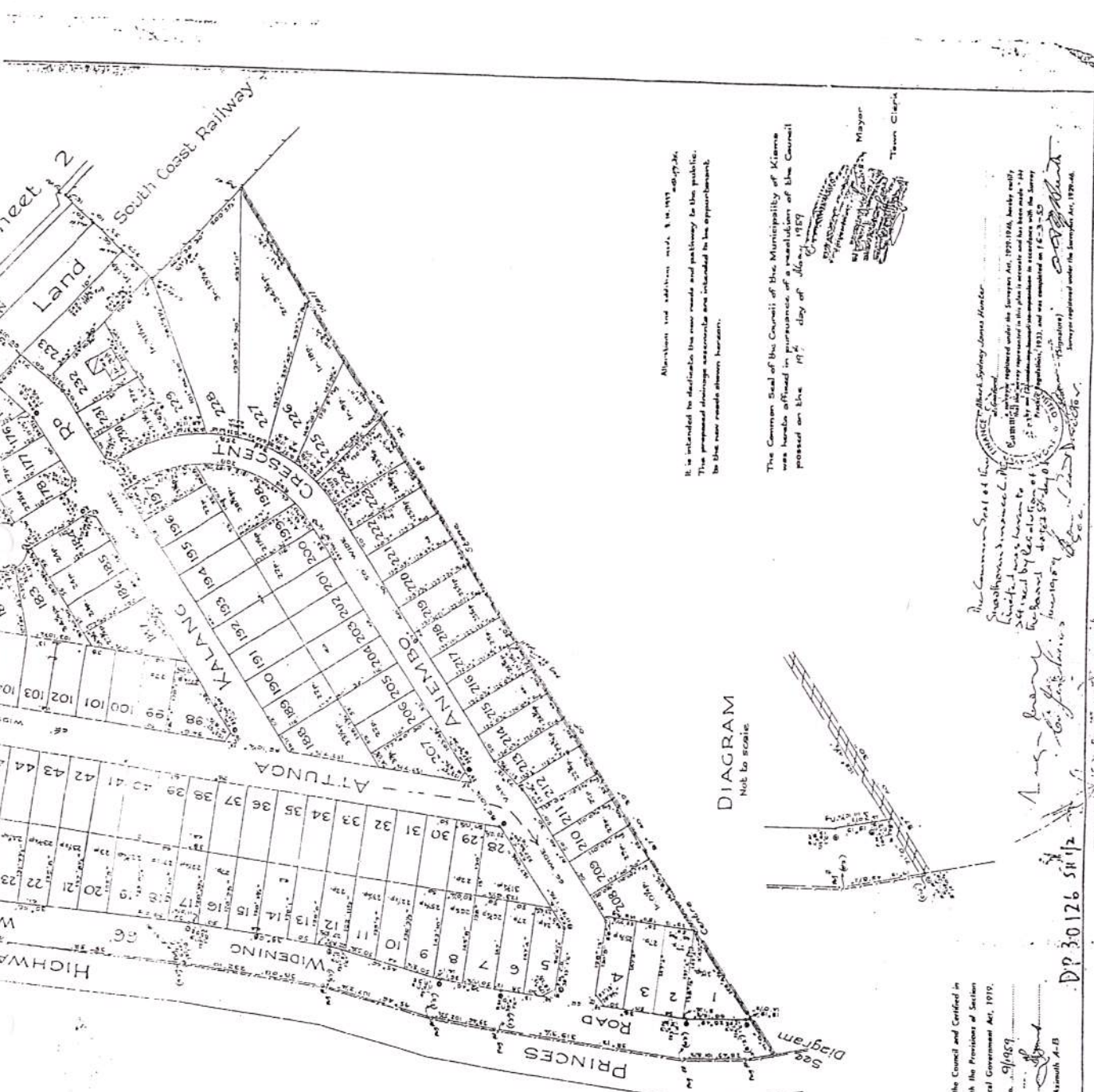


CONVERSION TABLE ADDED IN  
REGISTRAR GENERAL'S DEPARTMENT  
DP 30126 SH 1/2 CONTD

FEET INCHES	METRES
117 1 1/4	29.681
117 1 3/4	29.706
118 1 1/4	29.731
118 1 3/4	29.756
119 1 1/4	29.781
119 1 3/4	29.806
120 1 1/4	30.031
120 1 3/4	30.056
121 1 1/4	30.281
121 1 3/4	30.306
122 1 1/4	30.531
122 1 3/4	30.556
123 1 1/4	30.781
123 1 3/4	30.806
124 1 1/4	31.031
124 1 3/4	31.056
125 1 1/4	31.281
125 1 3/4	31.306
126 1 1/4	31.531
126 1 3/4	31.556
127 1 1/4	31.781
127 1 3/4	31.806
128 1 1/4	32.031
128 1 3/4	32.056
129 1 1/4	32.281
129 1 3/4	32.306
130 1 1/4	32.531
130 1 3/4	32.556
131 1 1/4	32.781
131 1 3/4	32.806
132 1 1/4	33.031
132 1 3/4	33.056
133 1 1/4	33.281
133 1 3/4	33.306
134 1 1/4	33.531
134 1 3/4	33.556
135 1 1/4	33.781
135 1 3/4	33.806
136 1 1/4	34.031
136 1 3/4	34.056
137 1 1/4	34.281
137 1 3/4	34.306
138 1 1/4	34.531
138 1 3/4	34.556
139 1 1/4	34.781
139 1 3/4	34.806
140 1 1/4	35.031
140 1 3/4	35.056
141 1 1/4	35.281
141 1 3/4	35.306
142 1 1/4	35.531
142 1 3/4	35.556
143 1 1/4	35.781
143 1 3/4	35.806
144 1 1/4	36.031
144 1 3/4	36.056
145 1 1/4	36.281
145 1 3/4	36.306
146 1 1/4	36.531
146 1 3/4	36.556
147 1 1/4	36.781
147 1 3/4	36.806
148 1 1/4	37.031
148 1 3/4	37.056
149 1 1/4	37.281
149 1 3/4	37.306
150 1 1/4	37.531
150 1 3/4	37.556
151 1 1/4	37.781
151 1 3/4	37.806
152 1 1/4	38.031
152 1 3/4	38.056
153 1 1/4	38.281
153 1 3/4	38.306
154 1 1/4	38.531
154 1 3/4	38.556
155 1 1/4	38.781
155 1 3/4	38.806
156 1 1/4	39.031
156 1 3/4	39.056
157 1 1/4	39.281
157 1 3/4	39.306
158 1 1/4	39.531
158 1 3/4	39.556
159 1 1/4	39.781
159 1 3/4	39.806
160 1 1/4	40.031
160 1 3/4	40.056
161 1 1/4	40.281
161 1 3/4	40.306
162 1 1/4	40.531
162 1 3/4	40.556
163 1 1/4	40.781
163 1 3/4	40.806
164 1 1/4	41.031
164 1 3/4	41.056
165 1 1/4	41.281
165 1 3/4	41.306
166 1 1/4	41.531
166 1 3/4	41.556
167 1 1/4	41.781
167 1 3/4	41.806
168 1 1/4	42.031
168 1 3/4	42.056
169 1 1/4	42.281
169 1 3/4	42.306
170 1 1/4	42.531
170 1 3/4	42.556
171 1 1/4	42.781
171 1 3/4	42.806
172 1 1/4	43.031
172 1 3/4	43.056
173 1 1/4	43.281
173 1 3/4	43.306
174 1 1/4	43.531
174 1 3/4	43.556
175 1 1/4	43.781
175 1 3/4	43.806
176 1 1/4	44.031
176 1 3/4	44.056
177 1 1/4	44.281
177 1 3/4	44.306
178 1 1/4	44.531
178 1 3/4	44.556
179 1 1/4	44.781
179 1 3/4	44.806
180 1 1/4	45.031
180 1 3/4	45.056
181 1 1/4	45.281
181 1 3/4	45.306
182 1 1/4	45.531
182 1 3/4	45.556
183 1 1/4	45.781
183 1 3/4	45.806
184 1 1/4	46.031
184 1 3/4	46.056
185 1 1/4	46.281
185 1 3/4	46.306
186 1 1/4	46.531
186 1 3/4	46.556
187 1 1/4	46.781
187 1 3/4	46.806
188 1 1/4	47.031
188 1 3/4	47.056
189 1 1/4	47.281
189 1 3/4	47.306
190 1 1/4	47.531
190 1 3/4	47.556
191 1 1/4	47.781
191 1 3/4	47.806
192 1 1/4	48.031
192 1 3/4	48.056
193 1 1/4	48.281
193 1 3/4	48.306
194 1 1/4	48.531
194 1 3/4	48.556
195 1 1/4	48.781
195 1 3/4	48.806
196 1 1/4	49.031
196 1 3/4	49.056
197 1 1/4	49.281
197 1 3/4	49.306
198 1 1/4	49.531
198 1 3/4	49.556
199 1 1/4	49.781
199 1 3/4	49.806
200 1 1/4	50.031
200 1 3/4	50.056

CONVERSION TABLE ADDED IN  
REGISTRAR GENERAL'S DEPARTMENT  
DP 30126 SH 1/2 CONTD

FEET INCHES	METRES
223 2 1/4	56.826
223 2 3/4	56.851
224 2 1/4	57.051
224 2 3/4	57.076
225 2 1/4	57.276
225 2 3/4	57.301
226 2 1/4	57.501
226 2 3/4	57.526
227 2 1/4	57.726
227 2 3/4	57.751
228 2 1/4	57.951
228 2 3/4	57.976
229 2 1/4	58.176
229 2 3/4	58.201
230 2 1/4	58.401
230 2 3/4	58.426
231 2 1/4	58.626
231 2 3/4	58.651
232 2 1/4	58.851
232 2 3/4	58.876
233 2 1/4	59.076
233 2 3/4	59.101
234 2 1/4	59.301
234 2 3/4	59.326
235 2 1/4	59.526
235 2 3/4	59.551
236 2 1/4	59.751
236 2 3/4	59.776
237 2 1/4	59.976
237 2 3/4	60.001
238 2 1/4	60.201
238 2 3/4	60.226
239 2 1/4	60.426
239 2 3/4	60.451
240 2 1/4	60.651
240 2 3/4	60.676
241 2 1/4	60.876
241 2 3/4	60.901
242 2 1/4	61.101
242 2 3/4	61.126
243 2 1/4	61.326
243 2 3/4	61.351
244 2 1/4	61.551
244 2 3/4	61.576
245 2 1/4	61.776
245 2 3/4	61.801
246 2 1/4	62.001
246 2 3/4	62.026
247 2 1/4	62.226
247 2 3/4	62.251
248 2 1/4	62.451
248 2 3/4	62.476
249 2 1/4	62.676
249 2 3/4	62.701
250 2 1/4	62.901
250 2 3/4	62.926
251 2 1/4	63.126
251 2 3/4	63.151
252 2 1/4	63.351
252 2 3/4	63.376
253 2 1/4	63.576
253 2 3/4	63.601
254 2 1/4	63.801
254 2 3/4	63.826
255 2 1/4	64.026
255 2 3/4	64.051
256 2 1/4	64.251
256 2 3/4	64.276
257 2 1/4	64.476
257 2 3/4	64.501
258 2 1/4	64.701
258 2 3/4	64.726
259 2 1/4	64.926
259 2 3/4	64.951
260 2 1/4	65.151
260 2 3/4	65.176
261 2 1/4	65.376
261 2 3/4	65.401
262 2 1/4	65.601
262 2 3/4	65.626
263 2 1/4	65.826
263 2 3/4	65.851
264 2 1/4	66.051
264 2 3/4	66.076
265 2 1/4	66.276
265 2 3/4	66.301
266 2 1/4	66.501
266 2 3/4	66.526
267 2 1/4	66.726
267 2 3/4	66.751
268 2 1/4	66.951
268 2 3/4	66.976
269 2 1/4	67.176
269 2 3/4	67.201
270 2 1/4	67.401
270 2 3/4	67.426
271 2 1/4	67.626
271 2 3/4	67.651
272 2 1/4	67.851
272 2 3/4	67.876
273 2 1/4	68.076
273 2 3/4	68.101
274 2 1/4	68.301
274 2 3/4	68.326
275 2 1/4	68.526
275 2 3/4	68.551
276 2 1/4	68.751
276 2 3/4	68.776
277 2 1/4	68.976
277 2 3/4	69.001
278 2 1/4	69.201
278 2 3/4	69.226
279 2 1/4	69.426
279 2 3/4	69.451
280 2 1/4	69.651
280 2 3/4	69.676
281 2 1/4	69.876
281 2 3/4	69.901
282 2 1/4	70.101
282 2 3/4	70.126
283 2 1/4	70.326
283 2 3/4	70.351
284 2 1/4	70.551
284 2 3/4	70.576
285 2 1/4	70.776
285 2 3/4	70.801
286 2 1/4	71.001
286 2 3/4	71.026
287 2 1/4	71.226
287 2 3/4	71.251
288 2 1/4	71.451
288 2 3/4	71.476
289 2 1/4	71.676
289 2 3/4	71.701
290 2 1/4	71.901
290 2 3/4	71.926



It is intended for dedication the new roads and pathways to the public.  
These proposed changes are intended to be the new roads shown hereon.

The Common Seal of the Municipality of Kiama  
was hereon affixed in pursuance of a resolution of the Council  
passed on the 19th day of May 1959

Mayor  
Town Clerk

Approved by the Council and Certified in  
accordance with the Provisions of Section  
327 of the Local Government Act, 1919.

Solicitor No. 91/55  
Council Clerk  
Date of Assent 1959

The Common Seal of the Municipality of Kiama  
was hereon affixed in pursuance of a resolution of the Council  
passed on the 19th day of May 1959

DP 30126 SH 1/2

AC RD P 50 M

11 1/4 50.000  
11 3/4 50.426  
12 1/4 50.851  
12 3/4 51.276  
13 1/4 51.701  
13 3/4 52.126  
14 1/4 52.551  
14 3/4 52.976  
15 1/4 53.401  
15 3/4 53.826  
16 1/4 54.251  
16 3/4 54.676  
17 1/4 55.101  
17 3/4 55.526  
18 1/4 55.951  
18 3/4 56.376  
19 1/4 56.801  
19 3/4 57.226  
20 1/4 57.651  
20 3/4 58.076  
21 1/4 58.501  
21 3/4 58.926  
22 1/4 59.351  
22 3/4 59.776  
23 1/4 60.201  
23 3/4 60.626  
24 1/4 61.051  
24 3/4 61.476  
25 1/4 61.901  
25 3/4 62.326  
26 1/4 62.751  
26 3/4 63.176  
27 1/4 63.601  
27 3/4 64.026  
28 1/4 64.451  
28 3/4 64.876  
29 1/4 65.301  
29 3/4 65.726  
30 1/4 66.151  
30 3/4 66.576  
31 1/4 67.001  
31 3/4 67.426  
32 1/4 67.851  
32 3/4 68.276  
33 1/4 68.701  
33 3/4 69.126  
34 1/4 69.551  
34 3/4 69.976  
35 1/4 70.401  
35 3/4 70.826  
36 1/4 71.251  
36 3/4 71.676  
37 1/4 72.101  
37 3/4 72.526  
38 1/4 72.951  
38 3/4 73.376  
39 1/4 73.801  
39 3/4 74.226  
40 1/4 74.651  
40 3/4 75.076  
41 1/4 75.501  
41 3/4 75.926  
42 1/4 76.351  
42 3/4 76.776  
43 1/4 77.201  
43 3/4 77.626  
44 1/4 78.051  
44 3/4 78.476  
45 1/4 78.901  
45 3/4 79.326  
46 1/4 79.751  
46 3/4 80.176  
47 1/4 80.601  
47 3/4 81.026  
48 1/4 81.451  
48 3/4 81.876  
49 1/4 82.301  
49 3/4 82.726  
50 1/4 83.151  
50 3/4 83.576  
51 1/4 84.001  
51 3/4 84.426  
52 1/4 84.851  
52 3/4 85.276  
53 1/4 85.701  
53 3/4 86.126  
54 1/4 86.551  
54 3/4 86.976  
55 1/4 87.401  
55 3/4 87.826  
56 1/4 88.251  
56 3/4 88.676  
57 1/4 89.101  
57 3/4 89.526  
58 1/4 89.951  
58 3/4 90.376  
59 1/4 90.801  
59 3/4 91.226  
60 1/4 91.651  
60 3/4 92.076  
61 1/4 92.501  
61 3/4 92.926  
62 1/4 93.351  
62 3/4 93.776  
63 1/4 94.201  
63 3/4 94.626  
64 1/4 95.051  
64 3/4 95.476  
65 1/4 95.901  
65 3/4 96.326  
66 1/4 96.751  
66 3/4 97.176  
67 1/4 97.601  
67 3/4 98.026  
68 1/4 98.451  
68 3/4 98.876  
69 1/4 99.301  
69 3/4 99.726  
70 1/4 100.151  
70 3/4 100.576  
71 1/4 101.001  
71 3/4 101.426  
72 1/4 101.851  
72 3/4 102.276  
73 1/4 102.701  
73 3/4 103.126  
74 1/4 103.551  
74 3/4 103.976  
75 1/4 104.401  
75 3/4 104.826  
76 1/4 105.251  
76 3/4 105.676  
77 1/4 106.101  
77 3/4 106.526  
78 1/4 106.951  
78 3/4 107.376  
79 1/4 107.801  
79 3/4 108.226  
80 1/4 108.651  
80 3/4 109.076  
81 1/4 109.501  
81 3/4 109.926  
82 1/4 110.351  
82 3/4 110.776  
83 1/4 111.201  
83 3/4 111.626  
84 1/4 112.051  
84 3/4 112.476  
85 1/4 112.901  
85 3/4 113.326  
86 1/4 113.751  
86 3/4 114.176  
87 1/4 114.601  
87 3/4 115.026  
88 1/4 115.451  
88 3/4 115.876  
89 1/4 116.301  
89 3/4 116.726  
90 1/4 117.151  
90 3/4 117.576  
91 1/4 118.001  
91 3/4 118.426  
92 1/4 118.851  
92 3/4 119.276  
93 1/4 119.701  
93 3/4 120.126  
94 1/4 120.551  
94 3/4 120.976  
95 1/4 121.401  
95 3/4 121.826  
96 1/4 122.251  
96 3/4 122.676  
97 1/4 123.101  
97 3/4 123.526  
98 1/4 123.951  
98 3/4 124.376  
9



O.P. 30126 5h 2/2

Scale: 100 feet 30 m. India.

2661. *Barb. pinnatifida* (L.) (Liliaceae)

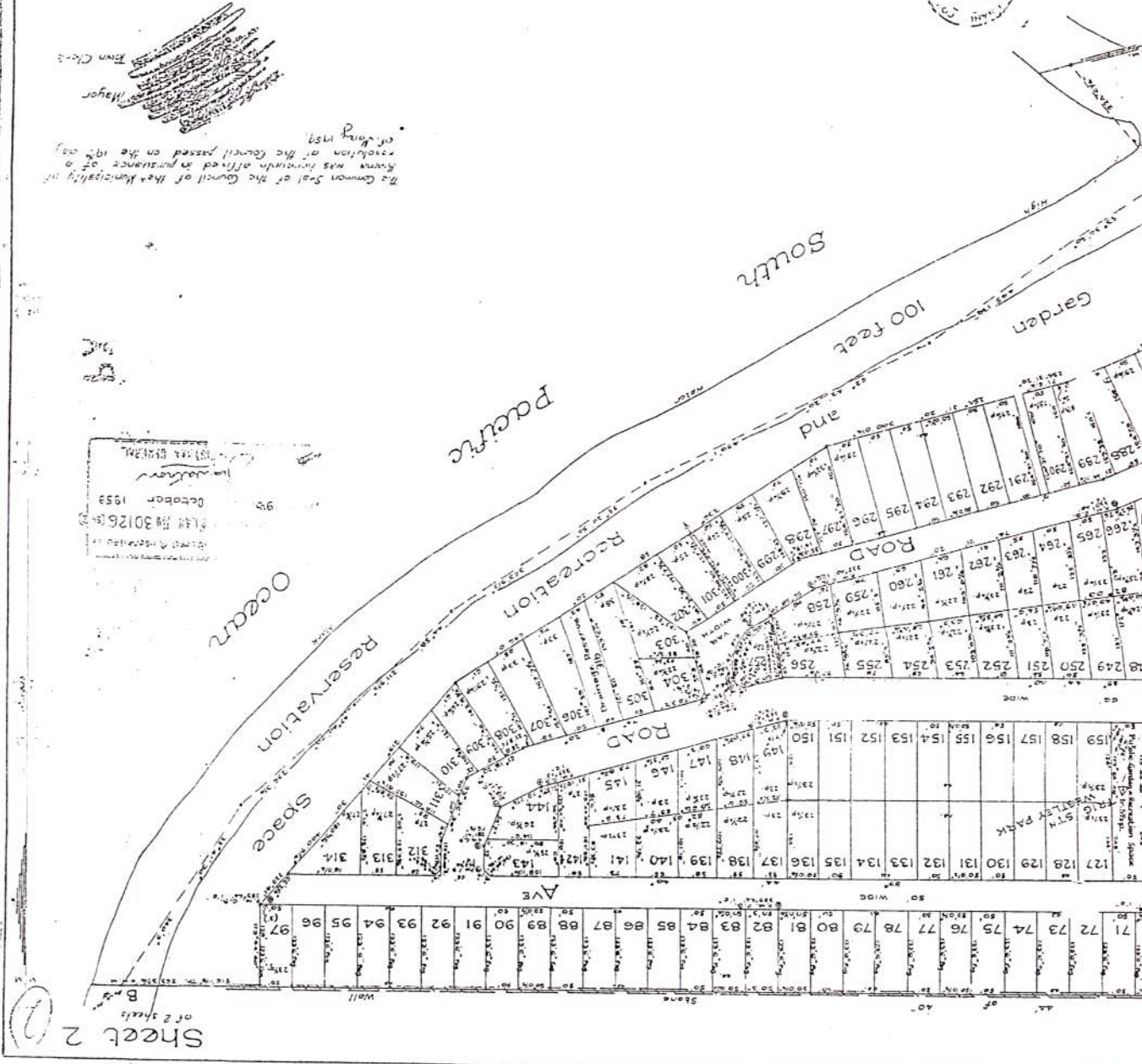
This is sheet 2 of plan referred to in certificate of a survey made by me on 6-3-50

The Common Seal of the Council of the Municipality of  
Kuma was herewith affixed in pursuance of a  
resolution of the Council passed on the 19<sup>th</sup> day  
of May 1959.

Major  
Brown

1. George DeBure Davies, Registeur General for New South Wales, certifies that this negative is a photograph made as a permanent record of a document in my custody this 15th day of February, 1980

ALON: NUMBER 3 ADDED, IN REGISTER GENERAL'S OFFICE



Sheet 2 of 2 sheets

DP 30126	SH	Z/Z	COPIES
52	3		15,926
52	5	1/2	13,959
52	10	1/2	16,139
52	11	1/4	16,139
53	11	1/2	16,182
53	16	1/4	16,136
53	5	1/2	16,299
54	6		16,437
54	7		16,437
55	5		16,764
55	6	5/8	16,916
55	7		16,916
55	7		16,962
56	6	3/4	17,069
57	5		17,355
57	6		17,355
58	6	1/4	17,637
59	6		18,106
60	5		18,280
60	6		18,537
60	5	1/4	18,537
60	5	1/4	18,921
60	5	1/4	18,934
60	5	1/4	19,517
61	5		19,517
61	5		19,539
61	5		19,539
64	-		19,557
65	-		19,612
65	-		19,990
65	-		19,990
66	0	1/2	20,130
66	0	1/2	20,130
66	2	1/4	20,178
67	5	1/4	20,555
67	5	1/4	20,555
68	1	1/4	20,557
68	1	1/4	20,557
68	1	1/2	20,765
68	4	3/4	20,887
68	9		20,955
68	9		20,955
70	-		21,331
70	-		21,331
70	3	1/2	21,425
70	3	1/2	21,425
70	6	1/4	21,520
71	6	1/4	21,800
71	6	1/4	21,800
72	5		22,250
73	6		22,250
73	6		22,456
73	8		22,456
74	1	1/4	22,467
74	1	1/4	22,467
75	3	3/4	22,803
75	3	3/4	22,803
75	6	3/4	23,063
76	6	3/4	23,063
76	6		23,165
76	12		23,165
77	12		23,253
77	12		23,253
78	3	3/4	23,778
81	6		24,461
82	-		24,799
82	-		24,799
85	5		25,705
85	5		25,705
85	2	1/4	25,705
86	0	1/2	27,036
90	11	5/8	27,730
90	11	5/8	27,730
92	3	1/4	28,124
92	3	1/4	28,124
94	5	3/4	28,797
94	5	3/4	28,797
94	10	3/4	28,924
94	11	1/2	28,924
95	9	3/4	29,587
95	9	3/4	29,587
97	1	1/4	30,752
97	1	1/4	30,752
100	10	3/4	30,752
100	10	3/4	30,752
102	1		31,413
102	1		31,413
103	3	1/2	31,413
103	3	1/2	31,413
109	5	1/8	32,263
109	5	1/8	32,263
110	8	1/4	32,263
110	8	1/4	32,263

[illegible]



CONVERSION TABLE ADDED IN  
REGISTRAR GENERAL'S DEPARTMENT

DP 30126	SH 1/2	FEET INCHES	METRES
1	10 1/2	0.267	
2	12 1/2	0.360	
3	14 1/2	0.457	
4	16 1/2	0.464	
5	18 1/2	0.468	
6	20 1/2	0.510	
7	22 1/2	0.568	
8	24 1/2	0.610	
9	26 1/2	0.708	
10	28 1/2	0.711	
11	30 1/2	0.724	
12	32 1/2	0.809	
13	34 1/2	0.914	
14	36 1/2	1.003	
15	38 1/2	1.270	
16	40 1/2	1.295	
17	42 1/2	1.366	
18	44 1/2	1.600	
19	46 1/2	1.651	
20	48 1/2	1.658	
21	50 1/2	1.684	
22	52 1/2	2.084	
23	54 1/2	2.489	
24	56 1/2	2.616	
25	58 1/2	2.675	
26	60 1/2	2.666	
27	62 1/2	2.921	
28	64 1/2	2.924	
29	66 1/2	3.046	
30	68 1/2	3.277	
31	70 1/2	3.327	
32	72 1/2	3.359	
33	74 1/2	3.538	
34	76 1/2	3.627	
35	78 1/2	3.776	
36	80 1/2	3.962	
37	82 1/2	4.267	
38	84 1/2	4.280	
39	86 1/2	4.293	
40	88 1/2	4.312	
41	90 1/2	4.629	
42	92 1/2	4.677	
43	94 1/2	5.099	
44	96 1/2	5.124	
45	98 1/2	5.250	
46	100 1/2	6.050	
47	102 1/2	6.353	
48	104 1/2	6.928	
49	106 1/2	7.159	
50	108 1/2	7.350	
51	110 1/2	7.550	
52	112 1/2	7.560	
53	114 1/2	7.531	
54	116 1/2	7.584	
55	118 1/2	7.563	
56	120 1/2	7.709	
57	122 1/2	8.359	
58	124 1/2	8.653	
59	126 1/2	8.854	
60	128 1/2	9.144	
61	130 1/2	9.169	
62	132 1/2	9.724	
63	134 1/2	10.463	
64	136 1/2	10.700	
65	138 1/2	10.808	
66	140 1/2	10.868	
67	142 1/2	10.996	
68	144 1/2	11.278	
69	146 1/2	11.582	
70	148 1/2	11.697	
71	150 1/2	11.687	

CONVERSION TABLE ADDED IN  
REGISTRAR GENERAL'S DEPARTMENT

DP 30126	SH 1/2	FEET INCHES	METRES
72	152 1/2	11.957	
73	154 1/2	12.167	
74	156 1/2	12.382	
75	158 1/2	12.596	
76	160 1/2	12.810	
77	162 1/2	13.024	
78	164 1/2	13.237	
79	166 1/2	13.450	
80	168 1/2	13.663	
81	170 1/2	13.876	
82	172 1/2	14.089	
83	174 1/2	14.302	
84	176 1/2	14.515	
85	178 1/2	14.728	
86	180 1/2	14.941	
87	182 1/2	15.154	
88	184 1/2	15.367	
89	186 1/2	15.580	
90	188 1/2	15.793	
91	190 1/2	16.006	
92	192 1/2	16.219	
93	194 1/2	16.432	
94	196 1/2	16.645	
95	198 1/2	16.858	
96	200 1/2	17.071	
97	202 1/2	17.284	
98	204 1/2	17.497	
99	206 1/2	17.710	
100	208 1/2	17.923	
101	210 1/2	18.136	
102	212 1/2	18.349	
103	214 1/2	18.562	
104	216 1/2	18.775	
105	218 1/2	18.988	
106	220 1/2	19.201	
107	222 1/2	19.414	
108	224 1/2	19.627	
109	226 1/2	19.840	
110	228 1/2	20.053	
111	230 1/2	20.266	
112	232 1/2	20.479	
113	234 1/2	20.692	
114	236 1/2	20.905	
115	238 1/2	21.118	
116	240 1/2	21.331	
117	242 1/2	21.544	
118	244 1/2	21.757	
119	246 1/2	21.970	
120	248 1/2	22.183	
121	250 1/2	22.396	
122	252 1/2	22.609	
123	254 1/2	22.822	
124	256 1/2	23.035	
125	258 1/2	23.248	
126	260 1/2	23.461	
127	262 1/2	23.674	
128	264 1/2	23.887	
129	266 1/2	24.100	
130	268 1/2	24.313	
131	270 1/2	24.526	
132	272 1/2	24.739	
133	274 1/2	24.952	
134	276 1/2	25.165	
135	278 1/2	25.378	
136	280 1/2	25.591	
137	282 1/2	25.804	
138	284 1/2	26.017	
139	286 1/2	26.230	
140	288 1/2	26.443	
141	290 1/2	26.656	
142	292 1/2	26.869	
143	294 1/2	27.082	
144	296 1/2	27.295	
145	298 1/2	27.508	
146	300 1/2	27.721	
147	302 1/2	27.934	
148	304 1/2	28.147	
149	306 1/2	28.360	
150	308 1/2	28.573	
151	310 1/2	28.786	
152	312 1/2	28.999	
153	314 1/2	29.212	
154	316 1/2	29.425	
155	318 1/2	29.638	
156	320 1/2	29.851	
157	322 1/2	30.064	
158	324 1/2	30.277	
159	326 1/2	30.490	
160	328 1/2	30.703	
161	330 1/2	30.916	
162	332 1/2	31.129	
163	334 1/2	31.342	
164	336 1/2	31.555	
165	338 1/2	31.768	
166	340 1/2	31.981	
167	342 1/2	32.194	
168	344 1/2	32.407	
169	346 1/2	32.620	
170	348 1/2	32.833	
171	350 1/2	33.046	
172	352 1/2	33.259	
173	354 1/2	33.472	
174	356 1/2	33.685	
175	358 1/2	33.898	
176	360 1/2	34.111	
177	362 1/2	34.324	
178	364 1/2	34.537	
179	366 1/2	34.750	
180	368 1/2	34.963	
181	370 1/2	35.176	
182	372 1/2	35.389	
183	374 1/2	35.602	
184	376 1/2	35.815	
185	378 1/2	36.028	
186	380 1/2	36.241	
187	382 1/2	36.454	
188	384 1/2	36.667	
189	386 1/2	36.880	
190	388 1/2	37.093	
191	390 1/2	37.306	
192	392 1/2	37.519	
193	394 1/2	37.732	
194	396 1/2	37.945	
195	398 1/2	38.158	
196	400 1/2	38.371	
197	402 1/2	38.584	
198	404 1/2	38.797	
199	406 1/2	39.010	
200	408 1/2	39.223	

CONVERSION TABLE ADDED IN  
REGISTRAR GENERAL'S DEPARTMENT

DP 30126	SH 1/2	FEET INCHES	METRES
201	410 1/2	39.436	
202	412 1/2	39.649	
203	414 1/2	39.862	
204	416 1/2	40.075	
205	418 1/2	40.288	
206	420 1/2	40.501	
207	422 1/2	40.714	
208	424 1/2	40.927	
209	426 1/2	41.140	
210	428 1/2	41.353	
211	430 1/2	41.566	
212	432 1/2	41.779	
213	434 1/2	41.992	
214	436 1/2	42.205	
215	438 1/2	42.418	
216	440 1/2	42.631	
217	442 1/2	42.844	
218	444 1/2	43.057	
219	446 1/2	43.270	
220	448 1/2	43.483	
221	450 1/2	43.696	
222	452 1/2	43.909	
223	454 1/2	44.122	
224	456 1/2	44.335	
225	458 1/2	44.548	
226	460 1/2	44.761	
227	462 1/2	44.974	
228	464 1/2	45.187	
229	466 1/2	45.400	
230	468 1/2	45.613	
231	470 1/2	45.826	
232	472 1/2	46.039	
233	474 1/2	46.252	
234	476 1/2	46.465	
235	478 1/2	46.678	
236	480 1/2	46.891	
237	482 1/2	47.104	
238	484 1/2	47.317	
239	486 1/2	47.530	
240	488 1/2	47.743	
241	490 1/2	47.956	
242	492 1/2	48.169	
243	494 1/2	48.382	
244	496 1/2	48.595	
245	498 1/2	48.808	
246	500 1/2	49.021	
247	502 1/2	49.234	
248	504 1/2	49.447	
249	506 1/2	49.660	
250	508 1/2	49.873	
251	510 1/2	50.086	
252	512 1/2	50.299	
253	514 1/2	50.512	
254	516 1/2	50.725	
255	518 1/2	50.938	
256	520 1/2	51.151	
257	522 1/2	51.364	
258	524 1/2	51.577	
259	526 1/2	51.790	
260	528 1/2	52.003	
261	530 1/2	52.216	
262	532 1/2	52.429	
263	534 1/2	52.642	
264	536 1/2	52.855	
265	538 1/2	53.068	
266	540 1/2	53.281	
267	542 1/2	53.494	
268	544 1/2	53.707	
269	546 1/2	53.920	
270	548 1/2	54.133	
271	550 1/2	54.346	
272	552 1/2	54.559	
273	554 1/2	54.772	
274	556 1/2	54.985	
275	558 1/2	55.198	
276	560 1/2	55.411	
277	562 1/2	55.624	
278	564 1/2	55.837	
279	566 1/2	56.050	
280	568 1/2	56.263	
281	570 1/2	56.476	
282	572 1/2	56.689	
283	574 1/2	56.902	
284	576 1/2	57.115	
285	578 1/2	57.328	
286	580 1/2	57.541	
287	582 1/2	57.754	
288	584 1/2	57.967	
289	586 1/2	58.180	
290	588 1/2	58.393	
291	590 1/2	58.606	
292	592 1/2	58.819	
293	594 1/2	59.032	
294	596 1/2	59.245	
295	598 1/2	59.458	
296	600 1/2	59.671	
297	602 1/2	59.884	
298	604 1/2	60.097	
299	606 1/2	60.310	
300	608 1/2	60.523	

CONVERSION TABLE ADDED IN  
REGISTRAR GENERAL'S DEPARTMENT

DP 30126	SH 1/2	CONT.
FELT INCHES		METRES
223	2 1/4	66.02
225	10 1/2	77.90
226	10	76.21
227	10	77.91
228	10	77.91
229	10	77.91
230	10	77.91
231	10	77.91
232	10	77.91
233	10	77.91
234	10	77.91
235	10	77.91
236	10	77.91
237	10	77.91
238	10	77.91
239	10	77.91
240	10	77.91
241	10	77.91
242	10	77.91
243	10	77.91
244	10	77.91
245	10	77.91
246	10	77.91
247	10	77.91
248	10	77.91
249	10	77.91
250	10	77.91
251	10	77.91
252	10	77.91
253	10	77.91
254	10	77.91
255	10	77.91
256	10	77.91
257	10	77.91
258	10	77.91
259	10	77.91
260	10	77.91
261	10	77.91
262	10	77.91
263	10	77.91
264	10	77.91
265	10	77.91
266	10	77.91
267	10	77.91
268	10	77.91
269	10	77.91
270	10	77.91
271	10	77.91
272	10	77.91
273	10	77.91
274	10	77.91
275	10	77.91
276	10	77.91
277	10	77.91
278	10	77.91
279	10	77.91
280	10	77.91
281	10	77.91
282	10	77.91
283	10	77.91
284	10	77.91
285	10	77.91
286	10	77.91
287	10	77.91
288	10	77.91
289	10	77.91
290	10	77.91
291	10	77.91
292	10	77.91
293	10	77.91
294	10	77.91
295	10	77.91
296	10	77.91
297	10	77.91
298	10	77.91
299	10	77.91
300	10	77.91
301	10	77.91
302	10	77.91
303	10	77.91
304	10	77.91
305	10	77.91
306	10	77.91
307	10	77.91
308	10	77.91
309	10	77.91
310	10	77.91
311	10	77.91
312	10	77.91
313	10	77.91
314	10	77.91
315	10	77.91
316	10	77.91
317	10	77.91
318	10	77.91
319	10	77.91
320	10	77.91
321	10	77.91
322	10	77.91
323	10	77.91
324	10	77.91
325	10	77.91
326	10	77.91
327	10	77.91
328	10	77.91
329	10	77.91
330	10	77.91
331	10	77.91
332	10	77.91
333	10	77.91
334	10	77.91
335	10	77.91
336	10	77.91
337	10	77.91
338	10	77.91
339	10	77.91
340	10	77.91
341	10	77.91
342	10	77.91
343	10	77.91
344	10	77.91
345	10	77.91
346	10	77.91
347	10	77.91
348	10	77.91
349	10	77.91
350	10	77.91
351	10	77.91
352	10	77.91
353	10	77.91
354	10	77.91
355	10	77.91
356	10	77.91
357	10	77.91
358	10	77.91
359	10	77.91
360	10	77.91
361	10	77.91
362	10	77.91
363	10	77.91
364	10	77.91
365	10	77.91
366	10	77.91
367	10	77.91
368	10	77.91
369	10	77.91
370	10	77.91
371	10	77.91
372	10	77.91
373	10	77.91
374	10	77.91
375	10	77.91
376	10	77.91
377	10	77.91
378	10	77.91
379	10	77.91
380	10	77.91
381	10	77.91
382	10	77.91
383	10	77.91
384	10	77.91
385	10	77.91
386	10	77.91
387	10	77.91
388	10	77.91
389	10	77.91
390	10	77.91
391	10	77.91
392	10	77.91
393	10	77.91
394	10	77.91
395	10	77.91
396	10	77.91
397	10	77.91
398	10	77.91
399	10	77.91
400	10	77.91
401	10	77.91
402	10	77.91
403	10	77.91
404	10	77.91
405	10	77.91
406	10	77.91
407	10	77.91
408	10	77.91
409	10	77.91
410	10	77.91
411	10	77.91
412	10	77.91
413	10	77.91
414	10	77.91
415	10	77.91
416	10	77.91
417	10	77.91
418	10	77.91
419	10	77.91
420	10	77.91
421	10	77.91
422	10	77.91
423	10	77.91
424	10	77.91
425	10	77.91
426	10	77.91
427	10	77.91
428	10	77.91
429	10	77.91
430	10	77.91
431	10	77.91
432	10	77.91
433	10	77.91
434	10	77.91
435	10	77.91
436	10	77.91
437	10	77.91
438	10	77.91
439	10	77.91
440	10	77.91
441	10	77.91
442	10	77.91
443	10	77.91
444	10	77.91
445	10	77.91
446	10	77.91
447	10	77.91
448	10	77.91
449	10	77.91
450	10	77.91
451	10	77.91
452	10	77.91
453	10	77.91
454	10	77.91
455	10	77.91
456	10	77.91
457	10	77.91
458	10	77.91
459	10	77.91
460	10	77.91
461	10	77.91
462	10	77.91
463	10	77.91
464	10	77.91
465	10	77.91
466	10	77.91
467	10	77.91
468	10	77.91
469	10	77.91
470	10	77.91
471	10	77.91
472	10	77.91
473	10	77.91
474	10	77.91
475	10	77.91
476	10	77.91
477	10	77.91
478	10	77.91
479	10	77.91
480	10	77.91
481	10	77.91
482	10	77.91
483	10	77.91
484	10	77.91
485	10	77.91
486	10	77.91
487	10	77.91
488	10	77.91
489	10	77.91
490	10	77.91
491	10	77.91
492	10	77.91
493	10	77.91
494	10	77.91
495	10	77.91
496	10	77.91
497	10	77.91
498	10	77.91
499	10	77.91
500	10	77.91
501	10	77.91
502	10	77.91
503	10	77.91
504	10	77.91
505	10	77.91
506	10	77.91
507	10	77.91
508	10	77.91
509	10	77.91
510	10	77.91
511	10	77.91
512	10	77.91
513	10	77.91
514	10	77.91
515	10	77.91
516	10	77.91
517	10	77.91
518	10	77.91
519	10	77.91
520	10	77.91
521	10	77.91
522	10	77.91
523	10	77.91
524	10	77.91
525	10	77.91
526	10	77.91
527	10	77.91
528	10	77.91
529	10	77.91
530	10	77.91
531	10	77.91
532	10	77.91
533	10	77.91
534	10	77.91
535	10	77.91
536	10	77.91
537	10	77.91
538	10	77.91
539	10	77.91
540	10	77.91
541	10	77.91
542	10	77.91
543	10	77.91
544	10	77.91
545	10	77.91
546	10	77.91
547	10	77.91
548	10	77.91
549	10	77.91
550	10	77.91
551	10	77.91
552	10	77.91
553	10	77.91
554	10	77.91
555	10	77.91
556	10	77.91
557	10	77.91
558	10	77.91
559	10	77.91
560	10	77.91
561	10	77.91
562	10	77.91
563	10	77.91
564	10	77.91
565	10	77.91
566	10	77.91
567	10	77.91
568	10	77.91
569	10	77.91
570	10	77.91
571	10	77.91
572	10	77.91
573	10	77.91
574	10	77.91
575	10	77.91
576	10	77.91
577	10	77.91
578	10	77.91
579	10	77.91
580	10	77.91
581	10	77.91
582	10	77.91
583	10	77.91
584	10	77.91
585	10	77.91
586	10	77.91
587	10	77.91
588	10	77.91
589	10	77.91
590	10	77.91
591	10	77.91
592	10	77.91
593	10	77.91
594	10	77.91
595	10	77.91
596	10	77.91
597	10	77.91
598	10	77.91
599	10	77.91
600	10	77.91
601	10	77.91
602	10	77.91
603	10	77.91
604	10	77.91
605	10	77.91
606	10	77.91
607	10	77.91
608	10	77.91
609	10	77.91
610	10	77.91
611	10	77.91
612	10	77.91
613	10	77.91
614	10	77.91
615	10	77.91
616	10	77.91
617	10	77.91
618	10	77.91
619	10	77.91
620	10	77.91
621	10	77.91
622	10	77.91
623	10	77.91
624	10	77.91
625	10	77.91
626	10	77.91
627	10	77.91
628	10	77.91
629	10	77.91
630	10	77.91
631	10	77.91
632	10	77.91
633	10	77.91
634	10	77.91
635	10	77.91
636	10	77.91
637	10	77.91
638	10	77.91
639	10	77.91
640	10	77.91
641	10	77.91
642	10	77.91
643	10	77.91
644	10	77.91
645	10	77.91
646	10	77.91
647	10	77.91
648	10	77.

CONVERSION TABLE ADDED IN REGISTER GENERAL'S DEPARTMENT			
DP 30126	SH 2/2		
FEET INCHES	METRES		
1 2 3/8	0.365		
1 6	0.457		
1 6 1/4	0.464		
1 6 1/2	0.470		
1 6 3/4	0.476		
1 7	0.483		
1 7 1/4	0.489		
1 7 1/2	0.495		
1 7 3/4	0.501		
1 8	1.003		
1 8 1/4	1.009		
1 8 1/2	1.015		
1 8 3/4	1.021		
1 9	1.027		
1 9 1/4	1.033		
1 9 1/2	1.039		
1 9 3/4	1.045		
2 0	2.031		
2 0 1/4	2.037		
2 0 1/2	2.043		
2 0 3/4	2.049		
2 1	3.035		
2 1 1/4	3.041		
2 1 1/2	3.047		
2 1 3/4	3.053		
2 2	4.039		
2 2 1/4	4.045		
2 2 1/2	4.051		
2 2 3/4	4.057		
2 3	5.043		
2 3 1/4	5.049		
2 3 1/2	5.055		
2 3 3/4	5.061		
2 4	6.047		
2 4 1/4	6.053		
2 4 1/2	6.059		
2 4 3/4	6.065		
2 5	7.051		
2 5 1/4	7.057		
2 5 1/2	7.063		
2 5 3/4	7.069		
2 6	8.055		
2 6 1/4	8.061		
2 6 1/2	8.067		
2 6 3/4	8.073		
2 7	9.059		
2 7 1/4	9.065		
2 7 1/2	9.071		
2 7 3/4	9.077		
2 8	10.063		
2 8 1/4	10.069		
2 8 1/2	10.075		
2 8 3/4	10.081		
2 9	11.067		
2 9 1/4	11.073		
2 9 1/2	11.079		
2 9 3/4	11.085		
30	12.071		
30 1/4	12.077		
30 1/2	12.083		
30 3/4	12.089		
31	13.075		
31 1/4	13.081		
31 1/2	13.087		
31 3/4	13.093		
32	14.079		
32 1/4	14.085		
32 1/2	14.091		
32 3/4	14.097		
33	15.083		
33 1/4	15.089		
33 1/2	15.095		
33 3/4	15.101		
34	16.087		
34 1/4	16.093		
34 1/2	16.099		
34 3/4	16.105		
35	17.091		
35 1/4	17.097		
35 1/2	17.103		
35 3/4	17.109		
36	18.095		
36 1/4	18.101		
36 1/2	18.107		
36 3/4	18.113		
37	19.101		
37 1/4	19.107		
37 1/2	19.113		
37 3/4	19.119		
38	20.105		
38 1/4	20.111		
38 1/2	20.117		
38 3/4	20.123		
39	21.109		
39 1/4	21.115		
39 1/2	21.121		
39 3/4	21.127		
40	22.113		
40 1/4	22.119		
40 1/2	22.125		
40 3/4	22.131		
41	23.117		
41 1/4	23.123		
41 1/2	23.129		
41 3/4	23.135		
42	24.121		
42 1/4	24.127		
42 1/2	24.133		
42 3/4	24.139		
43	25.125		
43 1/4	25.131		
43 1/2	25.137		
43 3/4	25.143		
44	26.129		
44 1/4	26.135		
44 1/2	26.141		
44 3/4	26.147		
45	27.133		
45 1/4	27.139		
45 1/2	27.145		
45 3/4	27.151		
46	28.137		
46 1/4	28.143		
46 1/2	28.149		
46 3/4	28.155		
47	29.139		
47 1/4	29.145		
47 1/2	29.151		
47 3/4	29.157		
48	30.143		
48 1/4	30.149		
48 1/2	30.155		
48 3/4	30.161		
49	31.147		
49 1/4	31.153		
49 1/2	31.159		
49 3/4	31.165		
50	32.149		
50 1/4	32.155		
50 1/2	32.161		
50 3/4	32.167		
51	33.153		
51 1/4	33.159		
51 1/2	33.165		
51 3/4	33.171		
52	34.157		
52 1/4	34.163		
52 1/2	34.169		
52 3/4	34.175		
53	35.159		
53 1/4	35.165		
53 1/2	35.171		
53 3/4	35.177		
54	36.163		
54 1/4	36.169		
54 1/2	36.175		
54 3/4	36.181		
55	37.165		
55 1/4	37.171		
55 1/2	37.177		
55 3/4	37.183		
56	38.169		
56 1/4	38.175		
56 1/2	38.181		
56 3/4	38.187		
57	39.171		
57 1/4	39.177		
57 1/2	39.183		
57 3/4	39.189		
58	40.175		
58 1/4	40.181		
58 1/2	40.187		
58 3/4	40.193		
59	41.177		
59 1/4	41.183		
59 1/2	41.189		
59 3/4	41.195		
60	42.181		
60 1/4	42.187		
60 1/2	42.193		
60 3/4	42.199		
61	43.183		
61 1/4	43.189		
61 1/2	43.195		
61 3/4	43.201		
62	44.187		
62 1/4	44.193		
62 1/2	44.199		
62 3/4	44.205		
63	45.189		
63 1/4	45.195		
63 1/2	45.201		
63 3/4	45.207		
64	46.193		
64 1/4	46.199		
64 1/2	46.205		
64 3/4	46.211		
65	47.195		
65 1/4	47.201		
65 1/2	47.207		
65 3/4	47.213		
66	48.199		
66 1/4	48.205		
66 1/2	48.211		
66 3/4	48.217		
67	49.201		
67 1/4	49.207		
67 1/2	49.213		
67 3/4	49.219		
68	50.205		
68 1/4	50.211		
68 1/2	50.217		
68 3/4	50.223		
69	51.207		
69 1/4	51.213		
69 1/2	51.219		
69 3/4	51.225		
70	52.209		
70 1/4	52.215		
70 1/2	52.221		
70 3/4	52.227		
71	53.213		
71 1/4	53.219		
71 1/2	53.225		
71 3/4	53.231		
72	54.215		
72 1/4	54.221		
72 1/2	54.227		
72 3/4	54.233		
73	55.217		
73 1/4	55.223		
73 1/2	55.229		
73 3/4	55.235		
74	56.219		
74 1/4	56.225		
74 1/2	56.231		
74 3/4	56.237		
75	57.221		
75 1/4	57.227		
75 1/2	57.233		
75 3/4	57.239		
76	58.223		
76 1/4	58.229		
76 1/2	58.235		
76 3/4	58.241		
77	59.225		
77 1/4	59.231		
77 1/2	59.237		
77 3/4	59.243		
78	60.227		
78 1/4	60.233		
78 1/2	60.239		
78 3/4	60.245		
79	61.229		
79 1/4	61.235		
79 1/2	61.241		
79 3/4	61.247		
80	62.231		
80 1/4	62.237		
80 1/2	62.243		
80 3/4	62.249		
81	63.233		
81 1/4	63.239		
81 1/2	63.245		
81 3/4	63.251		
82	64.235		
82 1/4	64.241		
82 1/2	64.247		
82 3/4	64.253		
83	65.237		
83 1/4	65.243		
83 1/2	65.249		
83 3/4	65.255		
84	66.239		
84 1/4	66.245		
84 1/2	66.251		
84 3/4	66.257		
85	67.241		
85 1/4	67.247		
85 1/2	67.253		
85 3/4	67.259		
86	68.243		
86 1/4	68.249		
86 1/2	68.255		
86 3/4	68.261		
87	69.245		
87 1/4	69.251		
87 1/2	69.257		
87 3/4	69.263		
88	70.247		
88 1/4	70.253		
88 1/2	70.259		
88 3/4	70.265		
89	71.249		
89 1/4	71.255		
89 1/2	71.261		
89 3/4	71.267		
90	72.251		
90 1/4	72.257		
90 1/2	72.263		
90 3/4	72.269		
91	73.253		
91 1/4	73.259		
91 1/2	73.265		
91 3/4	73.271		
92	74.255		
92 1/4	74.261		
92 1/2	74.267		
92 3/4	74.273		
93	75.257		
93 1/4	75.263		
93 1/2	75.269		
93 3/4	75.275		
94	76.259		
94 1/4	76.265		
94 1/2	76.271		
94 3/4	76.277		
95	77.261		
95 1/4	77.267		
95 1/2	77.273		
95 3/4	77.279		
96	78.263		
96 1/4	78.269		
96 1/2	78.275		
96 3/4	78.281		
97	79.265		
97 1/4	79.271		
97 1/2	79.277		
97 3/4	79.283		
98	80.267		
98 1/4	80.273		
98 1/2	80.279		
98 3/4	80.285		
99	81.269		
99 1/4	81.275		
99 1/2	81.281		
99 3/4	81.287		
100	82.271		
100 1/4	82.277		
100 1/2	82.283		
100 3/4	82.289		
101	83.273		
101 1/4	83.279		
101 1/2	83.285		
101 3/4	83.291		
102	84.275		
102 1/4	84.281		
102 1/2	84.287		
102 3/4	84.293		
103	85.277		
103 1/4	85.283		
103 1/2	85.289		
103 3/4	85.295		
104	86.279		
104 1/4	86.285		
104 1/2	86.291		
104 3/4	86.297		
105	87.281		
105 1/4	87.287		</



FEET	INCHES	METRES
1	0	0.3048
2	0	0.6096
3	0	0.9144
4	0	1.2192
5	0	1.5240
6	0	1.8288
7	0	2.1336
8	0	2.4384
9	0	2.7432
10	0	3.0480
11	0	3.3528
12	0	3.6576
13	0	3.9624
14	0	4.2672
15	0	4.5720
16	0	4.8768
17	0	5.1816
18	0	5.4864
19	0	5.7912
20	0	6.0960
21	0	6.4008
22	0	6.7056
23	0	7.0104
24	0	7.3152
25	0	7.6200
26	0	7.9248
27	0	8.2296
28	0	8.5344
29	0	8.8392
30	0	9.1440
31	0	9.4488
32	0	9.7536
33	0	10.0584
34	0	10.3632
35	0	10.6680
36	0	10.9728
37	0	11.2776
38	0	11.5824
39	0	11.8872
40	0	12.1920
41	0	12.4968
42	0	12.8016
43	0	13.1064
44	0	13.4112
45	0	13.7160
46	0	14.0208
47	0	14.3256
48	0	14.6304
49	0	14.9352
50	0	15.2400
51	0	15.5448
52	0	15.8496
53	0	16.1544
54	0	16.4592
55	0	16.7640
56	0	17.0688
57	0	17.3736
58	0	17.6784
59	0	17.9832
60	0	18.2880
61	0	18.5928
62	0	18.8976
63	0	19.2024
64	0	19.5072
65	0	19.8120
66	0	20.1168
67	0	20.4216
68	0	20.7264
69	0	21.0312
70	0	21.3360
71	0	21.6408
72	0	21.9456
73	0	22.2504
74	0	22.5552
75	0	22.8600
76	0	23.1648
77	0	23.4696
78	0	23.7744
79	0	24.0792
80	0	24.3840
81	0	24.6888
82	0	24.9936
83	0	25.2984
84	0	25.6032
85	0	25.9080
86	0	26.2128
87	0	26.5176
88	0	26.8224
89	0	27.1272
90	0	27.4320
91	0	27.7368
92	0	28.0416
93	0	28.3464
94	0	28.6512
95	0	28.9560
96	0	29.2608
97	0	29.5656
98	0	29.8704
99	0	30.1752
100	0	30.4800
101	0	30.7848
102	0	31.0896
103	0	31.3944
104	0	31.6992
105	0	32.0040
106	0	32.3088
107	0	32.6136
108	0	32.9184
109	0	33.2232
110	0	33.5280
111	0	33.8328
112	0	34.1376
113	0	34.4424
114	0	34.7472
115	0	35.0520
116	0	35.3568
117	0	35.6616
118	0	35.9664
119	0	36.2712
120	0	36.5760
121	0	36.8808
122	0	37.1856
123	0	37.4904
124	0	37.7952
125	0	38.1000
126	0	38.4048
127	0	38.7096
128	0	39.0144
129	0	39.3192
130	0	39.6240
131	0	39.9288
132	0	40.2336
133	0	40.5384
134	0	40.8432
135	0	41.1480
136	0	41.4528
137	0	41.7576
138	0	42.0624
139	0	42.3672
140	0	42.6720
141	0	42.9768
142	0	43.2816
143	0	43.5864
144	0	43.8912
145	0	44.1960
146	0	44.5008
147	0	44.8056
148	0	45.1104
149	0	45.4152
150	0	45.7200
151	0	46.0248
152	0	46.3296
153	0	46.6344
154	0	46.9392
155	0	47.2440
156	0	47.5488
157	0	47.8536
158	0	48.1584
159	0	48.4632
160	0	48.7680
161	0	49.0728
162	0	49.3776
163	0	49.6824
164	0	49.9872
165	0	50.2920
166	0	50.5968
167	0	50.9016
168	0	51.2064
169	0	51.5112
170	0	51.8160
171	0	52.1208
172	0	52.4256
173	0	52.7304
174	0	53.0352
175	0	53.3400
176	0	53.6448
177	0	53.9496
178	0	54.2544
179	0	54.5592
180	0	54.8640
181	0	55.1688
182	0	55.4736
183	0	55.7784
184	0	56.0832
185	0	56.3880
186	0	56.6928
187	0	56.9976
188	0	57.3024
189	0	57.6072
190	0	57.9120
191	0	58.2168
192	0	58.5216
193	0	58.8264
194	0	59.1312
195	0	59.4360
196	0	59.7408
197	0	60.0456
198	0	60.3504
199	0	60.6552
200	0	60.9600
201	0	61.2648
202	0	61.5696
203	0	61.8744
204	0	62.1792
205	0	62.4840
206	0	62.7888
207	0	63.0936
208	0	63.3984
209	0	63.7032
210	0	64.0080
211	0	64.3128
212	0	64.6176
213	0	64.9224
214	0	65.2272
215	0	65.5320
216	0	65.8368
217	0	66.1416
218	0	66.4464
219	0	66.7512
220	0	67.0560
221	0	67.3608
222	0	67.6656
223	0	67.9704
224	0	68.2752
225	0	68.5800
226	0	68.8848
227	0	69.1896
228	0	69.4944
229	0	69.7992
230	0	70.1040
231	0	70.4088
232	0	70.7136
233	0	71.0184
234	0	71.3232
235	0	71.6280
236	0	71.9328
237	0	72.2376
238	0	72.5424
239	0	72.8472
240	0	73.1520
241	0	73.4568
242	0	73.7616
243	0	74.0664
244	0	74.3712
245	0	74.6760
246	0	74.9808
247	0	75.2856
248	0	75.5904
249	0	75.8952
250	0	76.2000
251	0	76.5048
252	0	76.8096
253	0	77.1144
254	0	77.4192
255	0	77.7240
256	0	78.0288
257	0	78.3336
258	0	78.6384
259	0	78.9432
260	0	79.2480
261	0	79.5528
262	0	79.8576
263	0	80.1624
264	0	80.4672
265	0	80.7720
266	0	81.0768
267	0	81.3816
268	0	81.6864
269	0	81.9912
270	0	82.2960
271	0	82.6008
272	0	82.9056
273	0	83.2104
274	0	83.5152
275	0	83.8200
276	0	84.1248
277	0	84.4296
278	0	84.7344
279	0	85.0392
280	0	85.3440
281	0	85.6488
282	0	85.9536
283	0	86.2584
284	0	86.5632
285	0	86.8680
286	0	87.1728
287	0	87.4776
288	0	87.7824
289	0	88.0872
290	0	88.3920
291	0	88.6968
292	0	89.0016
293	0	89.3064
294	0	89.6112
295	0	89.9160
296	0	90.2208
297	0	90.5256
298	0	90.8304
299	0	91.1352
300	0	91.4400
301	0	91.7448
302	0	92.0496
303	0	92.3544
304	0	92.6592
305	0	92.9640
306	0	93.2688
307	0	93.5736
308	0	93.8784
309	0	94.1832
310	0	94.4880
311	0	94.7928
312	0	95.0976
313	0	95.4024
314	0	95.7072
315	0	96.0120
316	0	96.3168
317	0	96.6216
318	0	96.9264
319	0	97.2312
320	0	97.5360
321	0	97.8408
322	0	98.1456
323	0	98.4504
324	0	98.7552
325	0	99.0600
326	0	99.3648
327	0	99.6696
328	0	99.9744
329	0	100.2792
330	0	100.5840
331	0	100.8888
332	0	101.1936
333	0	101.4984
334	0	101.8032
335	0	102.1080
336	0	102.4128
337	0	102.7176
338	0	103.0224
339	0	103.3272
340	0	103.6320
341	0	103.9368
342	0	104.2416
343	0	104.5464
344	0	104.8512
345	0	105.1560
346	0	105.4608
347	0	105.7656
348	0	106.0704
349	0	106.3752
350	0	106.6800
351	0	106.9848
352	0	107.2896
353	0	107.5944
354	0	107.8992
355	0	108.2040
356	0	108.5088
357	0	108.8136
358	0	109.1184
359	0	109.4232
360	0	109.7280
361	0	110.0328
362	0	110.3376
363	0	110.6424
364	0	110.9472
365	0	111.2520
366	0	111.5568
367	0	111.8616
368	0	112.1664
369	0	112.4712
370	0	112.7760
371	0	113.0808
372	0	113.3856
373	0	113.6904
374	0	113.9952
375	0	114.3000
376	0	114.6048
377	0	114.9096
378	0	115.2144
379	0	115.5192
380	0	115.8240
381	0	116.1288
382	0	116.4336
383	0	116.7384
384	0	117.0432
385	0	117.3480
386	0	117.6528
387	0	117.9576
388	0	118.2624
389	0	118.5672
390	0	118.8720
391	0	119.1768
392	0	119.4816
393	0	119.7864
394	0	120.0912
395	0	120.3960
396	0	

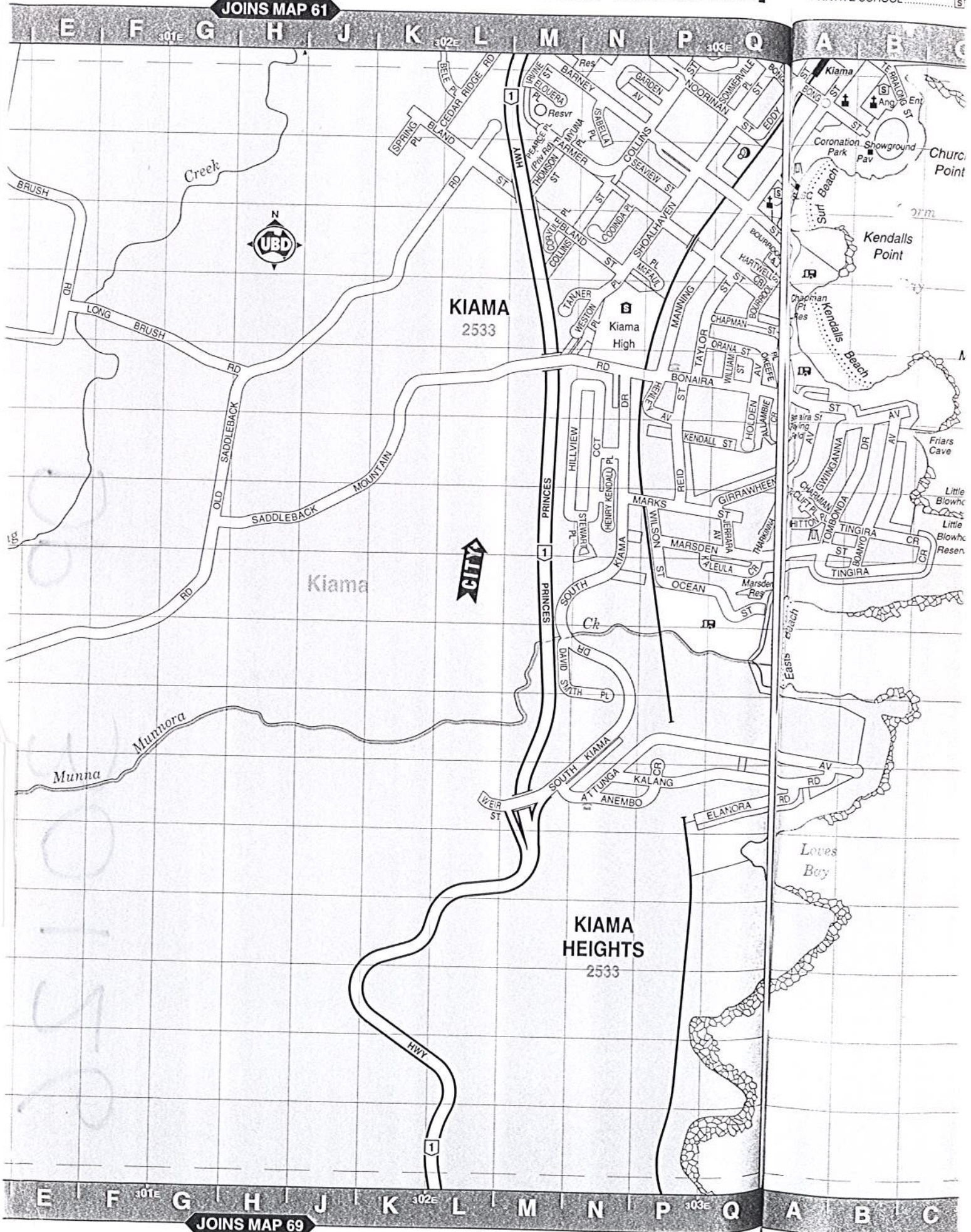


1: 20,000  
500 1000

- |                     |             |                  |
|---------------------|-------------|------------------|
| BOAT RAMP           | CAR PARK    | GUIDE HALL       |
| BOAT FUELLING POINT | CYCLEWAY    | HOSPITAL         |
| BOWLING CLUB        | GOLF COURSE | LIBRARY          |
|                     |             | PLACE OF WORSHIP |

- |                 |
|-----------------|
| POLICE STATION  |
| POST OFFICE     |
| PRIVATE COLLEGE |
| PRIVATE SCHOOL  |

JOINS MAP 61



**VE WATERFRONT HOLIDAY PARKS**  
**FREECALL 1800 803 897**







**LAND  
REGISTRY  
SERVICES**

**This cover page to your Document Image Request must accompany any hard copy created**

Please record the **Image Request Index 643039** and image reference for further follow-up on your search request.

Image searches are sent to you as soon as our office receives these from the NSWLRS. Search time is entirely dependent on the queued searches at the NSWLRS. **Please note: Average Approx. wait time is 20 minutes**

DOCUMENT REQUEST DETAILS	
Request Index	643039
Your Client Reference	
Search Type	NSWLRS Image Search (IMAGE) -CT
Search Date	Thursday, 27 June 2019
Image Format	PDF
NSWLRS Reference/Image Name	R576512

For further information please contact the team at Hazlett Information Services..

Hazlett Information Services hereby certifies that the information contained in this document has been provided electronically by the Registrar-General in accordance with Section 96B(2) of the Real Property Act 1900.

© Office of the Registrar-General 2018



Level 704/60 Park Street, Sydney 2000 | DX 1078 SYDNEY | GPO Box 96, Sydney 2001  
Ph: 02 92615211 Fax: 02 92647752.  
R Hazlett & Co. ABN 20 104 470 340  
[www.hazlett.com.au](http://www.hazlett.com.au)



# LAND REGISTRY SERVICES

NEW SOUTH WALES LAND REGISTRY SERVICES - HISTORICAL SEARCH

SEARCH DATE

27/6/2019 5:23PM

FOLIO: 69A/30126

First Title(s): SEE PRIOR TITLE(S)  
Prior Title(s): VOL 7966 FOL 42

Recorded	Number	Type of Instrument	C.T. Issue
25/6/1992	DP30126	DEPOSITED PLAN	LOT RECORDED FOLIO NOT CREATED
26/6/1992		CONVERTED TO AUTO CONSOL 7966-42	CONSOL CREATED CT NOT ISSUED

\*\*\* END OF SEARCH \*\*\*

HAZ-MARK-

PRINTED ON 27/6/2019

Hazlett Information Services hereby certifies that the information contained in this document has been provided electronically by the Registrar-General in accordance with Section 96B(2) of the Real Property Act 1900.

Date and Time of Search: Thu Jun 27 17:23:39 2019  
© Office of the Registrar-General 2018



Level 4, 122 Castlereagh Street, Sydney 2000 | DX 1078 SYDNEY | GPO Box 96, Sydney 2001  
Ph: 02 92615211 Fax: 02 92647752 | R Hazlett & Co. ABN 20 104 470 340 | www.hazlett.com.au



203

PrimaryAppn. No. 40782  
Reference to Last Titles  
Vol. 7899 Fols. 1 and 51

New South Wales



[CEI]



07966042

THIS TITLE IS THE REGISTER  
DO NOT DELIVER OR DESTROY  
RETURN TO LAND INFORMATION  
SERVICES SECT., GROUND FLOOR, L.T.D.

REGISTER BOOK  
VOL. 7966 FOL. 42

Issued on Transfer No. H396894  
**CANCELLED** W

ON ISSUE OF NEW FOLIO Auto Consol 7966-42

1962M7500

Reg. Genl

2-3-1978

THE COUNCIL OF THE MUNICIPALITY OF KIAMA, is now the proprietor of an Estate in Fee Simple, subject nevertheless to the reservations and conditions if any contained in the Grant hereinafter referred to and also subject to such encumbrances liens and interests as are notified hereon in That piece of land in the Municipality of Kiama Parish of Kiama and County of Camden shown in the plan hereon and therein edged red being Lot 69A, the Public Garden and Recreation Spaces and the Drainage Reserve in Deposited Plan No. 30126 and being parts of Portion 13 granted to William Montagu Manning on 23rd August 1839.

EXCEPTING THEREOUT all mines of coal reserved by the Crown Grant.

In witness whereof I have hereunto signed my name and affixed my Seal, this Fifteenth day of August 1960.

Signed in the presence of

*Wollmer*

*Lawson*



Registrar General.

**NOTIFICATION REFERRED TO**

No 9572922 Transfer and Grant of an Easement for water supply appurtenant to the land comprised in conveyance No 377 Book 303 affecting <sup>that</sup> part of the land within described shown so burdened in the plan hereon  
Registered 12-4-1978

*Lawson*

Registrar General

COMPUTER FOLIO NO FURTHER  
DEALINGS TO BE REGISTERED.

Persons are cautioned against altering or adding to this Certificate or any notification thereon.

*Refer to 5778  
Cediment of Attachment  
1962M7500  
Page 222  
Q371212*





New South Wales



[CERTIFICATE OF TITLE]

REGISTER BOOK

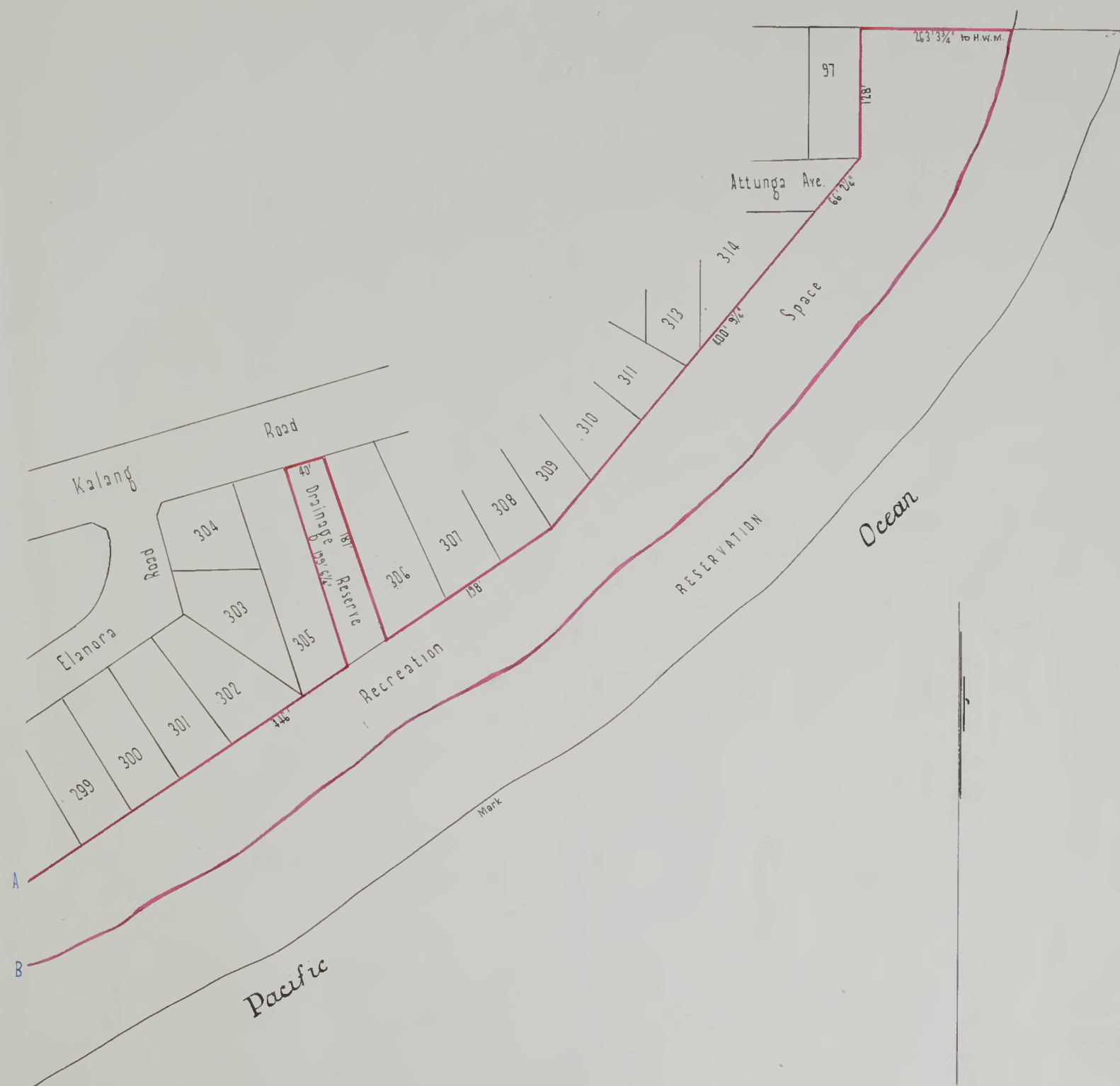
VOL. \_\_\_\_\_ FOL. \_\_\_\_\_

Issued on \_\_\_\_\_

Persons are cautioned against altering or adding to this Certificate or any notification thereon.







22

315 + 316<sup>2</sup> 317 in D.P. 30126

AND LOT 69A IN DP 30126

Total Area included in Certificate.

9ac. Ord. 36 per.

All lengths shown hereon are in Feet + Inches.

Scale 100 feet to one inch.

